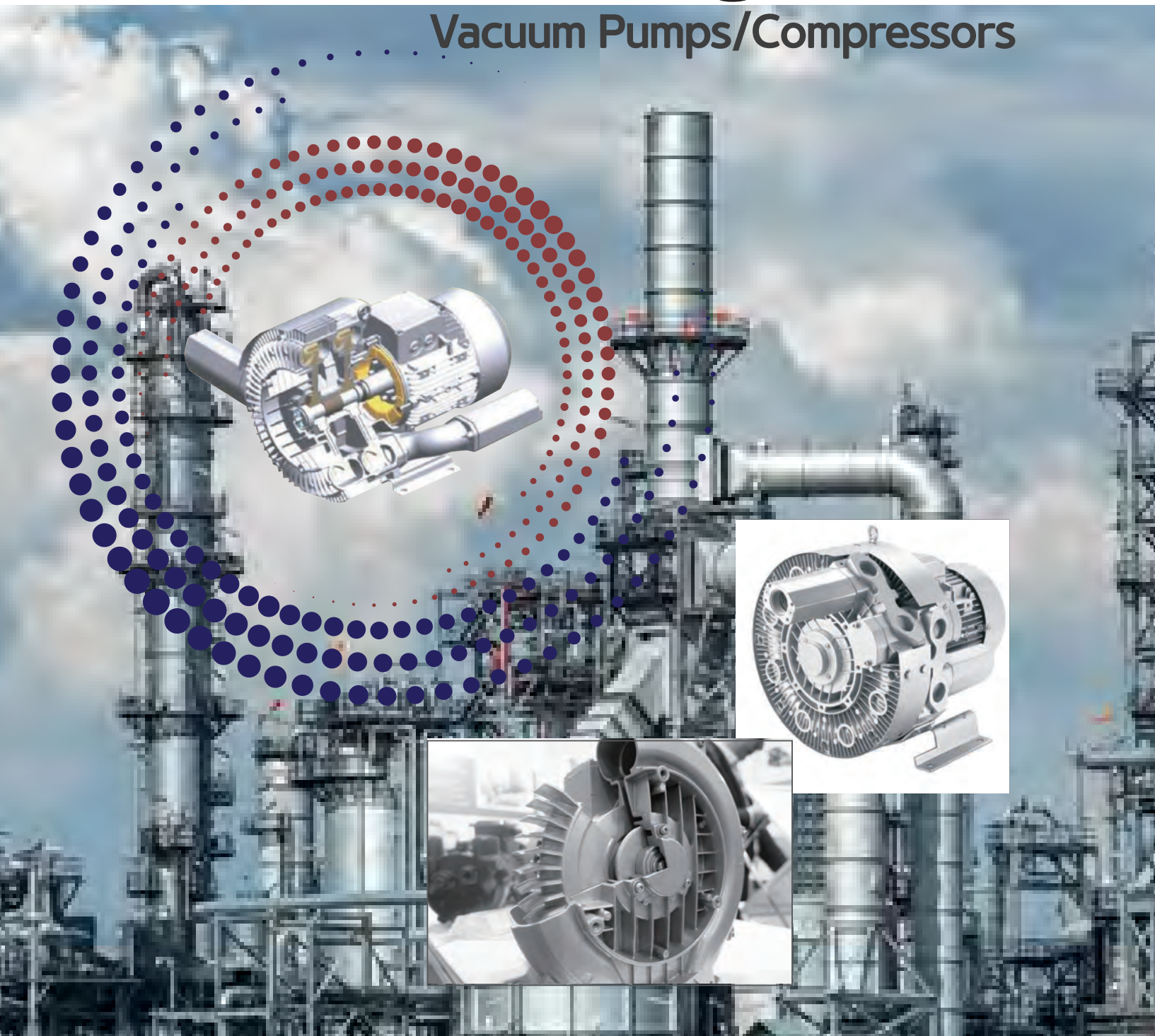


DJM Ring Blower

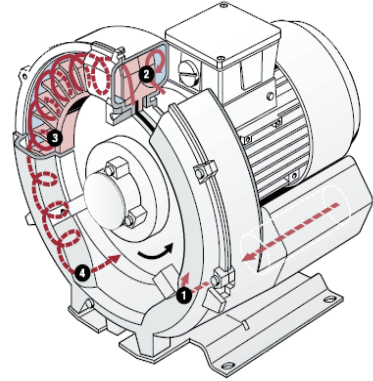
Vacuum Pumps/Compressors



소개 DJM 링블로어

링블로어 원리

- 1 흡입구로부터 공기가 유입됩니다.
- 2 임펠러의 원심력으로 압력이 상승합니다.
- 3 공기가 케이싱에 눌러 임펠러 사이에서 와류 운동이 발생합니다.
- 4 와류운동이 토출구까지 반복하여 강력한 풍압을 얻습니다.



DJM 링블로어 종류

고풍압형 4RB 시리즈



4RB 1단



4RB 2단



4RB 3단

고풍량형 2RB 시리즈

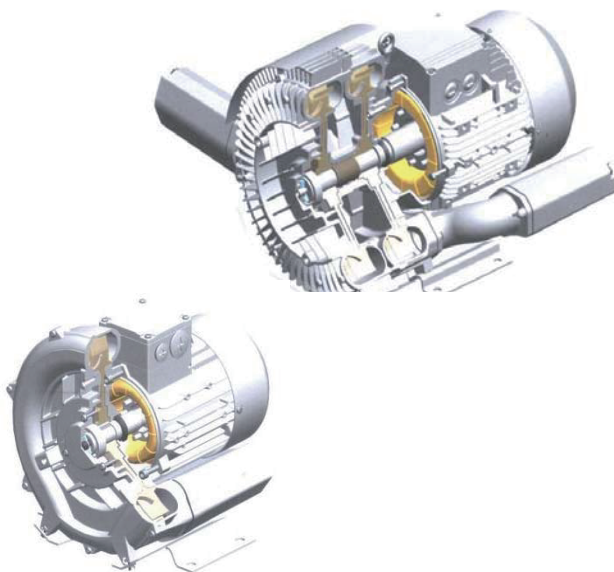


2RB 1단



2RB 2단

DJM 링블로어 특징



100% Oil Free

100% 무급유 압축으로 정비가 불필요합니다.

저소음과 무진동

임펠러 회전시 하우징과 접촉이 없으므로 정속한 운행이 가능합니다.

안정적인 풍량

원심력을 이용한 내부 디자인은 일정하고 안정된 풍량을 제공합니다.

유지보수 불필요

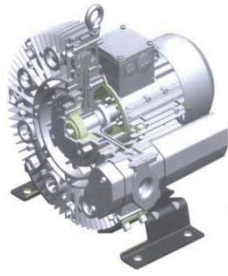
모터 브러시는 물론 마모가 없는 임펠러로 보수 및 유지 관리 비용을 절감할 수 있습니다.

내구성 향상

직결된 모터 샤프트와 임펠러에 의해서 장기간 작업 수행이 가능합니다.

소개 DJM 링블로어

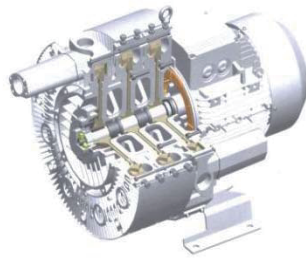
DJM 고품압형 4RB 링블로어



일반 임펠러와 달리 특수 설계된 임펠러와 케이싱에 의해서 발생하는 고품압으로 기존 링블로어로는 적용할 수 없는 용도에 까지 제품을 이용하실 수 있습니다.

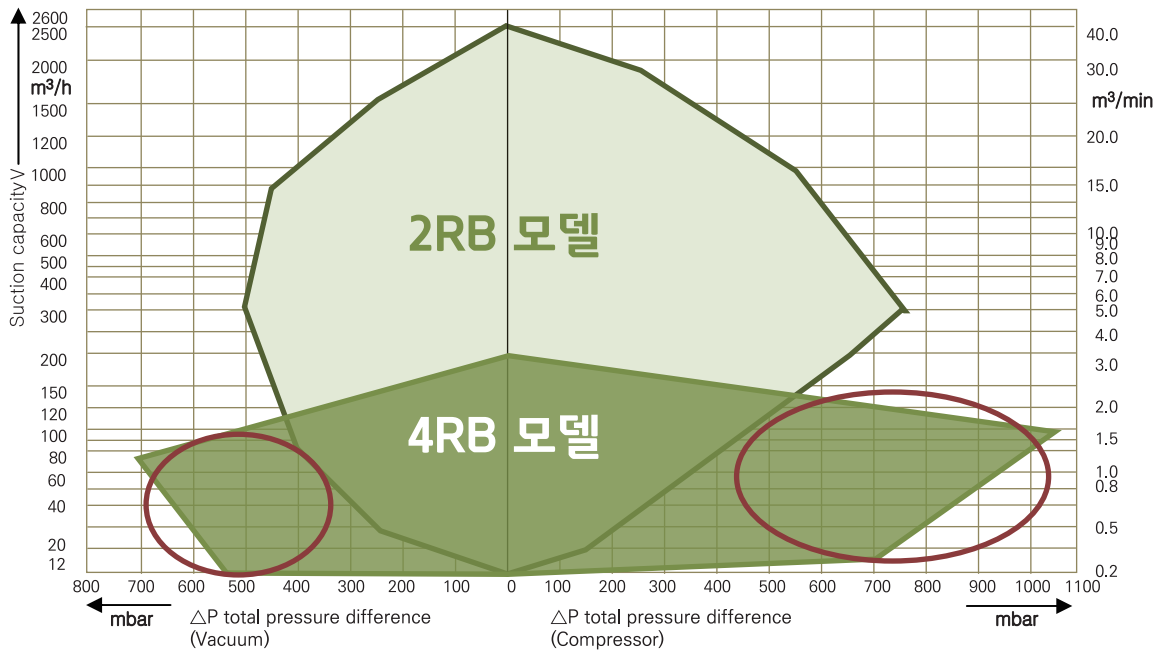
고품압 공급

지속적으로 고품압을 발생시켜 여러 산업에 적용이 가능합니다.



다양한 영역

1 단, 2단, 3단의 신형 임펠러로 사용 영역을 대폭 확대하였습니다. (최대 1,040mbar)



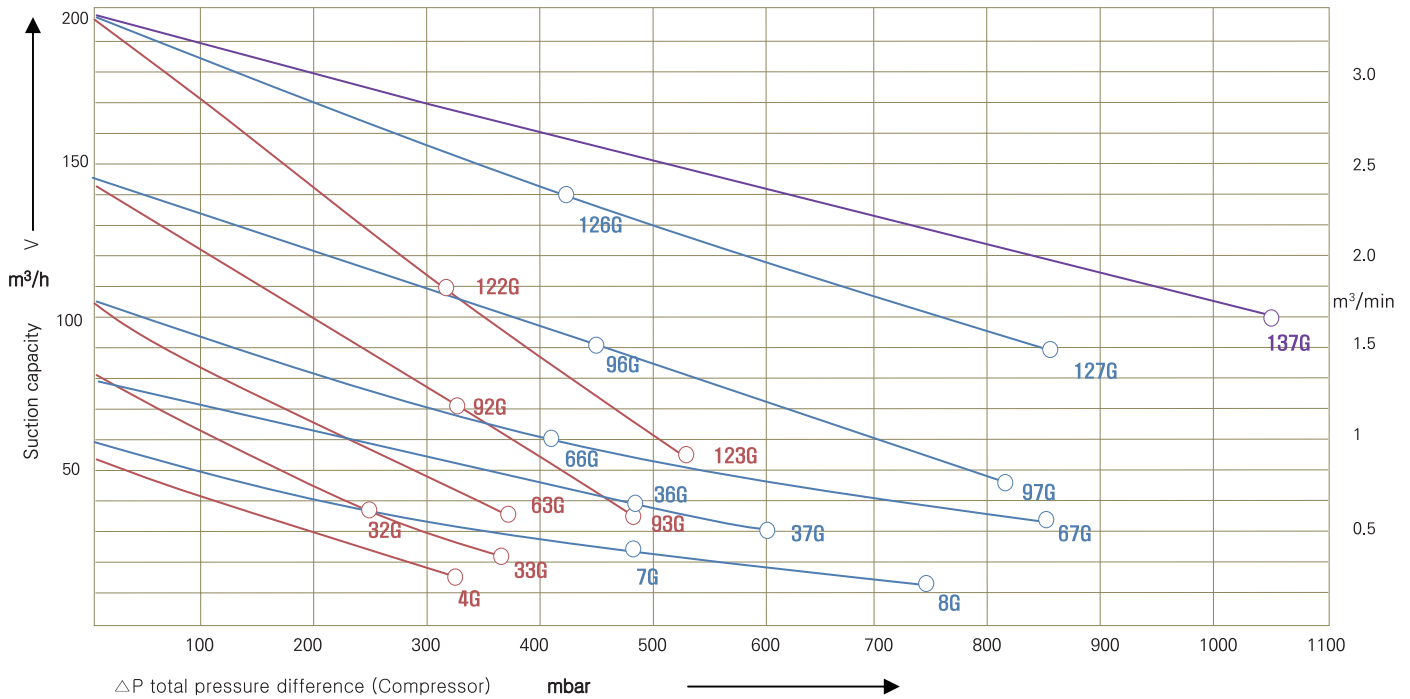
○ : 기존 링블로어의 품압을 증가하는 신형 4RB 제품의 곡선 영역

목차

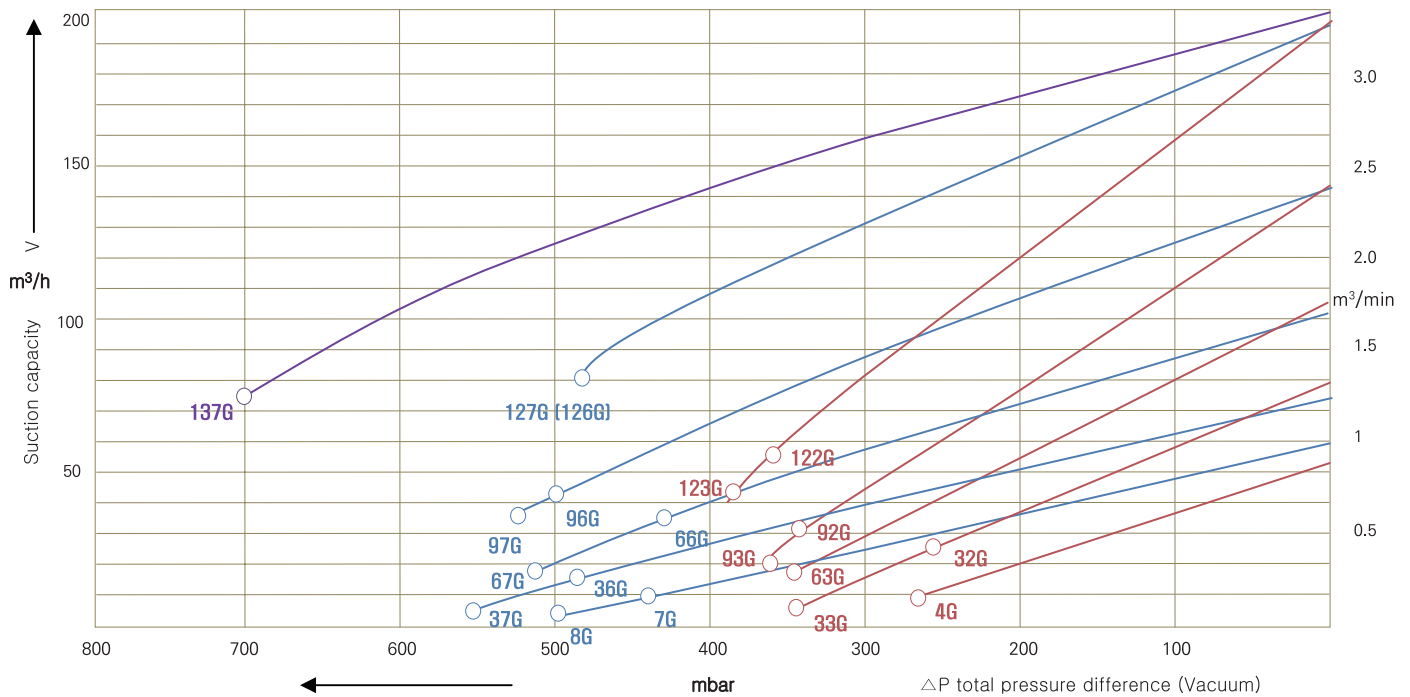
소개	01-02
4RB 씨리즈	03-04
2RB 씨리즈	05-06
단상 씨리즈	07-08
외형도	09-13
부품	14

성능곡선 (삼상 60Hz) 고풍압형 4RB 씨리즈

토출용 (Compressor)



흡입용 (Vacuum)



본 성능은 흡입구에서 압력이 1013 mbar 이고 토출구에서 공기온도가 15 °C 일 때를 기준으로 한 것입니다. 허용 오차는 ±10%.
총 압력차는 주변 온도가 25 °C 일 때의 수치입니다.

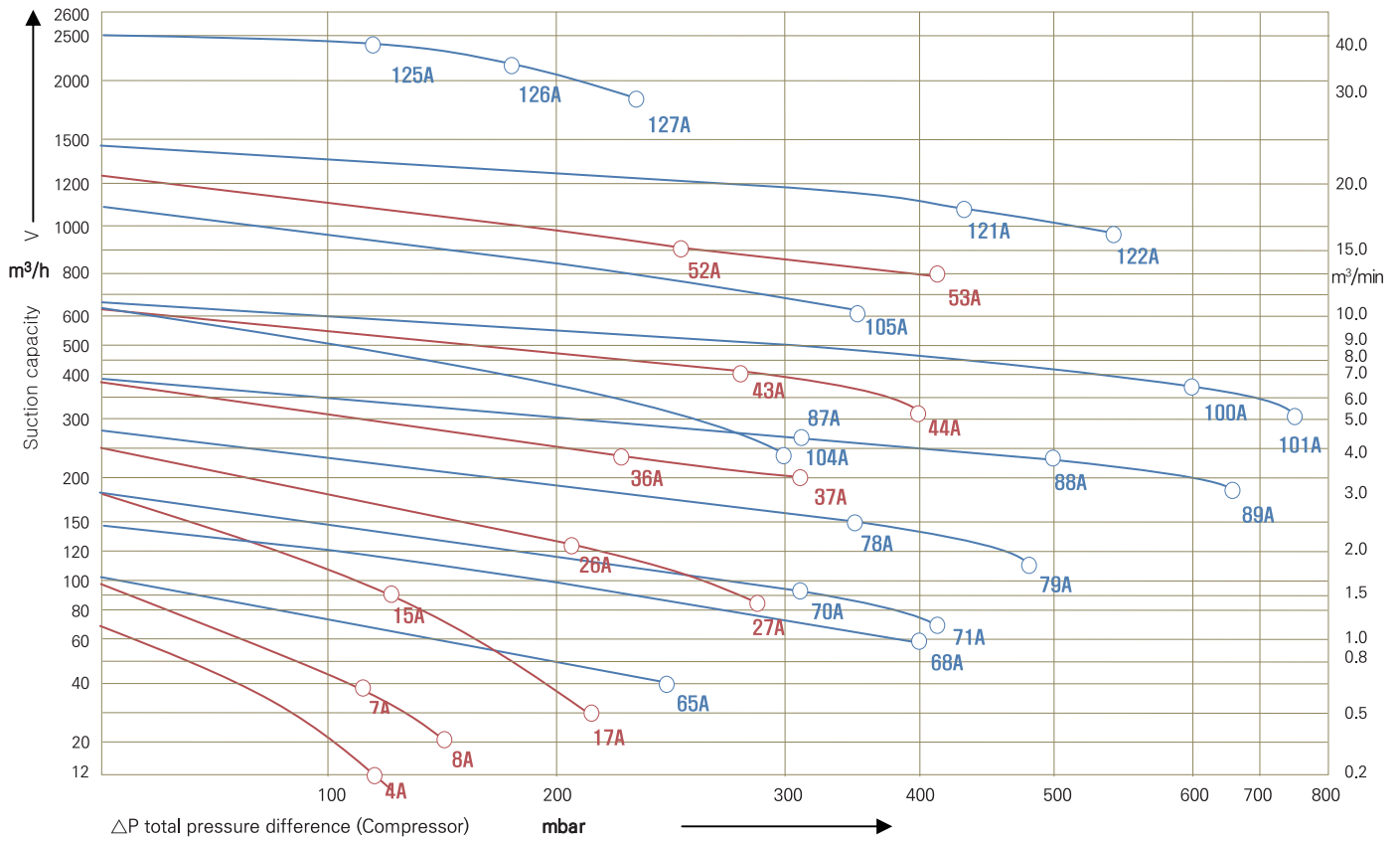
사양 (삼상) 고품압형 4RB 씨리즈

곡선번호	모델번호 *재고품	모터				중량	소음도	최대유량	최대 흡입압력	최대 토출압력																																																																																																																																																																																																																																																																							
		주파수	사양																																																																																																																																																																																																																																																																														
			출력	전압	전류																																																																																																																																																																																																																																																																												
			Hz	kw	V						A																																																																																																																																																																																																																																																																						
4G	*4RB 210-0AH16	50	0.55	200-240△345-415Y	2.8△/1.6Y	16	57	47	-230	290																																																																																																																																																																																																																																																																							
		60	0.63	220-275△380-480Y	3△/1.7Y						32G	4RB 310-0AH16	50	0.55	200-240△345-415Y	2.8△/1.6Y	16	57	66	-250	250	60	0.63	220-275△380-480Y	3△/1.7Y	33G	4RB 310-0AH26	50	0.81	200-240△345-415Y	4△/2.3Y	17	57	66	-280	350	60	0.94	220-275△380-480Y	4△/2.3Y	63G	*4RB 410-0AH16	50	1.1	200-240△345-415Y	5.4△/3.1Y	23	58	87	-300	380	60	1.3	220-275△380-480Y	5.4△/3.1Y	92G	4RB 510-0AH16	50	1.5	200-240△345-415Y	7.5△/4.3Y	26	64	120	-310	360	60	1.75	220-275△380-480Y	7.6△/4.4Y	93G	4RB 510-0AH26	50	2.2	200-240△345-415Y	11.4△/6.6Y	29	64	120	-310	470	60	2.55	220-275△380-480Y	11.2△/6.5Y	122G	4RB 610-0AH16	50	2.2	200-240△345-415Y	11.4△/6.6Y	32	65	165	-340	360	60	2.55	220-275△380-480Y	11.2△/6.5Y	123G	4RB 610-0AH36	50	3.3	200-240△345-415Y	13△/7.5Y	35	65	165	-340	480	60	3.8	220-275△380-480Y	14.2△/8.2Y	7G	*4RB 220-0AH26	50	0.81	200-240△345-415Y	4.0△/2.3Y	24	58	47	-370	490	60	0.94	220-275△380-480Y	4.0△/2.3Y	8G	4RB 220-0AH56	50	1.5	200-240△345-415Y	7.5△/4.3Y	28	58	47	-370	650	60	1.75	220-275△380-480Y	7.6△/4.4Y	36G	4RB 320-0AH46	50	1.1	200-240△345-415Y	5.4△/3.1Y	29	59	65	-400	480	60	1.3	220-275△380-480Y	5.4△/3.1Y	37G	4RB 320-0AH56	50	1.5	200-240△345-415Y	7.5△/4.3Y	30	59	65	-440	540	60	1.75	220-275△380-480Y	7.6△/4.4Y	66G	4RB 420-0AH26	50	1.5	200-240△345-415Y	7.5△/4.3Y	33	61	87	-480	450	60	1.75	220-275△380-480Y	7.6△/4.4Y	67G	*4RB 420-0AH56	50	3.3	200-240△345-415Y	13.0△/7.5Y	39	61	87	-500	750	60	3.8	220-275△380-480Y	13.8△/8Y	96G	4RB 520-0AH26	50	2.2	200-240△345-415Y	11.4△/6.6Y	40	64	120	-470	460	60	2.55	220-275△380-480Y	11.2△/6.5Y	97G	*4RB 520-0AH76	50	4	200-240△345-415Y	15.6△/9.0Y	51	65	120	-500	820	60	4.6	220-275△380-480Y	16.0△/9.5Y	126G	*4RB 620-0AH36	50	3.3	200-240△345-415Y	13△/7.5Y	48	67	165	-460	500	60	3.8	220-275△380-480Y	14.2△/8.2Y	127G	*4RB 620-0AH56	50	5.7	200-240△345-415Y	21.7△/12.5Y	65	68	165	-460	740	60	6.6	220-275△380-480Y	20.8△/12.0Y	137G	* 4RB 630-0AH66	50	7.5	200-240△345-415Y	27.7△/16.0Y	86	72
32G	4RB 310-0AH16	50	0.55	200-240△345-415Y	2.8△/1.6Y	16	57	66	-250	250																																																																																																																																																																																																																																																																							
		60	0.63	220-275△380-480Y	3△/1.7Y						33G	4RB 310-0AH26	50	0.81	200-240△345-415Y	4△/2.3Y	17	57	66	-280	350	60	0.94	220-275△380-480Y	4△/2.3Y	63G	*4RB 410-0AH16	50	1.1	200-240△345-415Y	5.4△/3.1Y	23	58	87	-300	380	60	1.3	220-275△380-480Y	5.4△/3.1Y	92G	4RB 510-0AH16	50	1.5	200-240△345-415Y	7.5△/4.3Y	26	64	120	-310	360	60	1.75	220-275△380-480Y	7.6△/4.4Y	93G	4RB 510-0AH26	50	2.2	200-240△345-415Y	11.4△/6.6Y	29	64	120	-310	470	60	2.55	220-275△380-480Y	11.2△/6.5Y	122G	4RB 610-0AH16	50	2.2	200-240△345-415Y	11.4△/6.6Y	32	65	165	-340	360	60	2.55	220-275△380-480Y	11.2△/6.5Y	123G	4RB 610-0AH36	50	3.3	200-240△345-415Y	13△/7.5Y	35	65	165	-340	480	60	3.8	220-275△380-480Y	14.2△/8.2Y	7G	*4RB 220-0AH26	50	0.81	200-240△345-415Y	4.0△/2.3Y	24	58	47	-370	490	60	0.94	220-275△380-480Y	4.0△/2.3Y	8G	4RB 220-0AH56	50	1.5	200-240△345-415Y	7.5△/4.3Y	28	58	47	-370	650	60	1.75	220-275△380-480Y	7.6△/4.4Y	36G	4RB 320-0AH46	50	1.1	200-240△345-415Y	5.4△/3.1Y	29	59	65	-400	480	60	1.3	220-275△380-480Y	5.4△/3.1Y	37G	4RB 320-0AH56	50	1.5	200-240△345-415Y	7.5△/4.3Y	30	59	65	-440	540	60	1.75	220-275△380-480Y	7.6△/4.4Y	66G	4RB 420-0AH26	50	1.5	200-240△345-415Y	7.5△/4.3Y	33	61	87	-480	450	60	1.75	220-275△380-480Y	7.6△/4.4Y	67G	*4RB 420-0AH56	50	3.3	200-240△345-415Y	13.0△/7.5Y	39	61	87	-500	750	60	3.8	220-275△380-480Y	13.8△/8Y	96G	4RB 520-0AH26	50	2.2	200-240△345-415Y	11.4△/6.6Y	40	64	120	-470	460	60	2.55	220-275△380-480Y	11.2△/6.5Y	97G	*4RB 520-0AH76	50	4	200-240△345-415Y	15.6△/9.0Y	51	65	120	-500	820	60	4.6	220-275△380-480Y	16.0△/9.5Y	126G	*4RB 620-0AH36	50	3.3	200-240△345-415Y	13△/7.5Y	48	67	165	-460	500	60	3.8	220-275△380-480Y	14.2△/8.2Y	127G	*4RB 620-0AH56	50	5.7	200-240△345-415Y	21.7△/12.5Y	65	68	165	-460	740	60	6.6	220-275△380-480Y	20.8△/12.0Y	137G	* 4RB 630-0AH66	50	7.5	200-240△345-415Y	27.7△/16.0Y	86	72	170	-730	1040	60	8.6	220-275△380-480Y	27.7△/16.0Y								
33G	4RB 310-0AH26	50	0.81	200-240△345-415Y	4△/2.3Y	17	57	66	-280	350																																																																																																																																																																																																																																																																							
		60	0.94	220-275△380-480Y	4△/2.3Y						63G	*4RB 410-0AH16	50	1.1	200-240△345-415Y	5.4△/3.1Y	23	58	87	-300	380	60	1.3	220-275△380-480Y	5.4△/3.1Y	92G	4RB 510-0AH16	50	1.5	200-240△345-415Y	7.5△/4.3Y	26	64	120	-310	360	60	1.75	220-275△380-480Y	7.6△/4.4Y	93G	4RB 510-0AH26	50	2.2	200-240△345-415Y	11.4△/6.6Y	29	64	120	-310	470	60	2.55	220-275△380-480Y	11.2△/6.5Y	122G	4RB 610-0AH16	50	2.2	200-240△345-415Y	11.4△/6.6Y	32	65	165	-340	360	60	2.55	220-275△380-480Y	11.2△/6.5Y	123G	4RB 610-0AH36	50	3.3	200-240△345-415Y	13△/7.5Y	35	65	165	-340	480	60	3.8	220-275△380-480Y	14.2△/8.2Y	7G	*4RB 220-0AH26	50	0.81	200-240△345-415Y	4.0△/2.3Y	24	58	47	-370	490	60	0.94	220-275△380-480Y	4.0△/2.3Y	8G	4RB 220-0AH56	50	1.5	200-240△345-415Y	7.5△/4.3Y	28	58	47	-370	650	60	1.75	220-275△380-480Y	7.6△/4.4Y	36G	4RB 320-0AH46	50	1.1	200-240△345-415Y	5.4△/3.1Y	29	59	65	-400	480	60	1.3	220-275△380-480Y	5.4△/3.1Y	37G	4RB 320-0AH56	50	1.5	200-240△345-415Y	7.5△/4.3Y	30	59	65	-440	540	60	1.75	220-275△380-480Y	7.6△/4.4Y	66G	4RB 420-0AH26	50	1.5	200-240△345-415Y	7.5△/4.3Y	33	61	87	-480	450	60	1.75	220-275△380-480Y	7.6△/4.4Y	67G	*4RB 420-0AH56	50	3.3	200-240△345-415Y	13.0△/7.5Y	39	61	87	-500	750	60	3.8	220-275△380-480Y	13.8△/8Y	96G	4RB 520-0AH26	50	2.2	200-240△345-415Y	11.4△/6.6Y	40	64	120	-470	460	60	2.55	220-275△380-480Y	11.2△/6.5Y	97G	*4RB 520-0AH76	50	4	200-240△345-415Y	15.6△/9.0Y	51	65	120	-500	820	60	4.6	220-275△380-480Y	16.0△/9.5Y	126G	*4RB 620-0AH36	50	3.3	200-240△345-415Y	13△/7.5Y	48	67	165	-460	500	60	3.8	220-275△380-480Y	14.2△/8.2Y	127G	*4RB 620-0AH56	50	5.7	200-240△345-415Y	21.7△/12.5Y	65	68	165	-460	740	60	6.6	220-275△380-480Y	20.8△/12.0Y	137G	* 4RB 630-0AH66	50	7.5	200-240△345-415Y	27.7△/16.0Y	86	72	170	-730	1040	60	8.6	220-275△380-480Y	27.7△/16.0Y																							
63G	*4RB 410-0AH16	50	1.1	200-240△345-415Y	5.4△/3.1Y	23	58	87	-300	380																																																																																																																																																																																																																																																																							
		60	1.3	220-275△380-480Y	5.4△/3.1Y						92G	4RB 510-0AH16	50	1.5	200-240△345-415Y	7.5△/4.3Y	26	64	120	-310	360	60	1.75	220-275△380-480Y	7.6△/4.4Y	93G	4RB 510-0AH26	50	2.2	200-240△345-415Y	11.4△/6.6Y	29	64	120	-310	470	60	2.55	220-275△380-480Y	11.2△/6.5Y	122G	4RB 610-0AH16	50	2.2	200-240△345-415Y	11.4△/6.6Y	32	65	165	-340	360	60	2.55	220-275△380-480Y	11.2△/6.5Y	123G	4RB 610-0AH36	50	3.3	200-240△345-415Y	13△/7.5Y	35	65	165	-340	480	60	3.8	220-275△380-480Y	14.2△/8.2Y	7G	*4RB 220-0AH26	50	0.81	200-240△345-415Y	4.0△/2.3Y	24	58	47	-370	490	60	0.94	220-275△380-480Y	4.0△/2.3Y	8G	4RB 220-0AH56	50	1.5	200-240△345-415Y	7.5△/4.3Y	28	58	47	-370	650	60	1.75	220-275△380-480Y	7.6△/4.4Y	36G	4RB 320-0AH46	50	1.1	200-240△345-415Y	5.4△/3.1Y	29	59	65	-400	480	60	1.3	220-275△380-480Y	5.4△/3.1Y	37G	4RB 320-0AH56	50	1.5	200-240△345-415Y	7.5△/4.3Y	30	59	65	-440	540	60	1.75	220-275△380-480Y	7.6△/4.4Y	66G	4RB 420-0AH26	50	1.5	200-240△345-415Y	7.5△/4.3Y	33	61	87	-480	450	60	1.75	220-275△380-480Y	7.6△/4.4Y	67G	*4RB 420-0AH56	50	3.3	200-240△345-415Y	13.0△/7.5Y	39	61	87	-500	750	60	3.8	220-275△380-480Y	13.8△/8Y	96G	4RB 520-0AH26	50	2.2	200-240△345-415Y	11.4△/6.6Y	40	64	120	-470	460	60	2.55	220-275△380-480Y	11.2△/6.5Y	97G	*4RB 520-0AH76	50	4	200-240△345-415Y	15.6△/9.0Y	51	65	120	-500	820	60	4.6	220-275△380-480Y	16.0△/9.5Y	126G	*4RB 620-0AH36	50	3.3	200-240△345-415Y	13△/7.5Y	48	67	165	-460	500	60	3.8	220-275△380-480Y	14.2△/8.2Y	127G	*4RB 620-0AH56	50	5.7	200-240△345-415Y	21.7△/12.5Y	65	68	165	-460	740	60	6.6	220-275△380-480Y	20.8△/12.0Y	137G	* 4RB 630-0AH66	50	7.5	200-240△345-415Y	27.7△/16.0Y	86	72	170	-730	1040	60	8.6	220-275△380-480Y	27.7△/16.0Y																																						
92G	4RB 510-0AH16	50	1.5	200-240△345-415Y	7.5△/4.3Y	26	64	120	-310	360																																																																																																																																																																																																																																																																							
		60	1.75	220-275△380-480Y	7.6△/4.4Y						93G	4RB 510-0AH26	50	2.2	200-240△345-415Y	11.4△/6.6Y	29	64	120	-310	470	60	2.55	220-275△380-480Y	11.2△/6.5Y	122G	4RB 610-0AH16	50	2.2	200-240△345-415Y	11.4△/6.6Y	32	65	165	-340	360	60	2.55	220-275△380-480Y	11.2△/6.5Y	123G	4RB 610-0AH36	50	3.3	200-240△345-415Y	13△/7.5Y	35	65	165	-340	480	60	3.8	220-275△380-480Y	14.2△/8.2Y	7G	*4RB 220-0AH26	50	0.81	200-240△345-415Y	4.0△/2.3Y	24	58	47	-370	490	60	0.94	220-275△380-480Y	4.0△/2.3Y	8G	4RB 220-0AH56	50	1.5	200-240△345-415Y	7.5△/4.3Y	28	58	47	-370	650	60	1.75	220-275△380-480Y	7.6△/4.4Y	36G	4RB 320-0AH46	50	1.1	200-240△345-415Y	5.4△/3.1Y	29	59	65	-400	480	60	1.3	220-275△380-480Y	5.4△/3.1Y	37G	4RB 320-0AH56	50	1.5	200-240△345-415Y	7.5△/4.3Y	30	59	65	-440	540	60	1.75	220-275△380-480Y	7.6△/4.4Y	66G	4RB 420-0AH26	50	1.5	200-240△345-415Y	7.5△/4.3Y	33	61	87	-480	450	60	1.75	220-275△380-480Y	7.6△/4.4Y	67G	*4RB 420-0AH56	50	3.3	200-240△345-415Y	13.0△/7.5Y	39	61	87	-500	750	60	3.8	220-275△380-480Y	13.8△/8Y	96G	4RB 520-0AH26	50	2.2	200-240△345-415Y	11.4△/6.6Y	40	64	120	-470	460	60	2.55	220-275△380-480Y	11.2△/6.5Y	97G	*4RB 520-0AH76	50	4	200-240△345-415Y	15.6△/9.0Y	51	65	120	-500	820	60	4.6	220-275△380-480Y	16.0△/9.5Y	126G	*4RB 620-0AH36	50	3.3	200-240△345-415Y	13△/7.5Y	48	67	165	-460	500	60	3.8	220-275△380-480Y	14.2△/8.2Y	127G	*4RB 620-0AH56	50	5.7	200-240△345-415Y	21.7△/12.5Y	65	68	165	-460	740	60	6.6	220-275△380-480Y	20.8△/12.0Y	137G	* 4RB 630-0AH66	50	7.5	200-240△345-415Y	27.7△/16.0Y	86	72	170	-730	1040	60	8.6	220-275△380-480Y	27.7△/16.0Y																																																					
93G	4RB 510-0AH26	50	2.2	200-240△345-415Y	11.4△/6.6Y	29	64	120	-310	470																																																																																																																																																																																																																																																																							
		60	2.55	220-275△380-480Y	11.2△/6.5Y						122G	4RB 610-0AH16	50	2.2	200-240△345-415Y	11.4△/6.6Y	32	65	165	-340	360	60	2.55	220-275△380-480Y	11.2△/6.5Y	123G	4RB 610-0AH36	50	3.3	200-240△345-415Y	13△/7.5Y	35	65	165	-340	480	60	3.8	220-275△380-480Y	14.2△/8.2Y	7G	*4RB 220-0AH26	50	0.81	200-240△345-415Y	4.0△/2.3Y	24	58	47	-370	490	60	0.94	220-275△380-480Y	4.0△/2.3Y	8G	4RB 220-0AH56	50	1.5	200-240△345-415Y	7.5△/4.3Y	28	58	47	-370	650	60	1.75	220-275△380-480Y	7.6△/4.4Y	36G	4RB 320-0AH46	50	1.1	200-240△345-415Y	5.4△/3.1Y	29	59	65	-400	480	60	1.3	220-275△380-480Y	5.4△/3.1Y	37G	4RB 320-0AH56	50	1.5	200-240△345-415Y	7.5△/4.3Y	30	59	65	-440	540	60	1.75	220-275△380-480Y	7.6△/4.4Y	66G	4RB 420-0AH26	50	1.5	200-240△345-415Y	7.5△/4.3Y	33	61	87	-480	450	60	1.75	220-275△380-480Y	7.6△/4.4Y	67G	*4RB 420-0AH56	50	3.3	200-240△345-415Y	13.0△/7.5Y	39	61	87	-500	750	60	3.8	220-275△380-480Y	13.8△/8Y	96G	4RB 520-0AH26	50	2.2	200-240△345-415Y	11.4△/6.6Y	40	64	120	-470	460	60	2.55	220-275△380-480Y	11.2△/6.5Y	97G	*4RB 520-0AH76	50	4	200-240△345-415Y	15.6△/9.0Y	51	65	120	-500	820	60	4.6	220-275△380-480Y	16.0△/9.5Y	126G	*4RB 620-0AH36	50	3.3	200-240△345-415Y	13△/7.5Y	48	67	165	-460	500	60	3.8	220-275△380-480Y	14.2△/8.2Y	127G	*4RB 620-0AH56	50	5.7	200-240△345-415Y	21.7△/12.5Y	65	68	165	-460	740	60	6.6	220-275△380-480Y	20.8△/12.0Y	137G	* 4RB 630-0AH66	50	7.5	200-240△345-415Y	27.7△/16.0Y	86	72	170	-730	1040	60	8.6	220-275△380-480Y	27.7△/16.0Y																																																																				
122G	4RB 610-0AH16	50	2.2	200-240△345-415Y	11.4△/6.6Y	32	65	165	-340	360																																																																																																																																																																																																																																																																							
		60	2.55	220-275△380-480Y	11.2△/6.5Y						123G	4RB 610-0AH36	50	3.3	200-240△345-415Y	13△/7.5Y	35	65	165	-340	480	60	3.8	220-275△380-480Y	14.2△/8.2Y	7G	*4RB 220-0AH26	50	0.81	200-240△345-415Y	4.0△/2.3Y	24	58	47	-370	490	60	0.94	220-275△380-480Y	4.0△/2.3Y	8G	4RB 220-0AH56	50	1.5	200-240△345-415Y	7.5△/4.3Y	28	58	47	-370	650	60	1.75	220-275△380-480Y	7.6△/4.4Y	36G	4RB 320-0AH46	50	1.1	200-240△345-415Y	5.4△/3.1Y	29	59	65	-400	480	60	1.3	220-275△380-480Y	5.4△/3.1Y	37G	4RB 320-0AH56	50	1.5	200-240△345-415Y	7.5△/4.3Y	30	59	65	-440	540	60	1.75	220-275△380-480Y	7.6△/4.4Y	66G	4RB 420-0AH26	50	1.5	200-240△345-415Y	7.5△/4.3Y	33	61	87	-480	450	60	1.75	220-275△380-480Y	7.6△/4.4Y	67G	*4RB 420-0AH56	50	3.3	200-240△345-415Y	13.0△/7.5Y	39	61	87	-500	750	60	3.8	220-275△380-480Y	13.8△/8Y	96G	4RB 520-0AH26	50	2.2	200-240△345-415Y	11.4△/6.6Y	40	64	120	-470	460	60	2.55	220-275△380-480Y	11.2△/6.5Y	97G	*4RB 520-0AH76	50	4	200-240△345-415Y	15.6△/9.0Y	51	65	120	-500	820	60	4.6	220-275△380-480Y	16.0△/9.5Y	126G	*4RB 620-0AH36	50	3.3	200-240△345-415Y	13△/7.5Y	48	67	165	-460	500	60	3.8	220-275△380-480Y	14.2△/8.2Y	127G	*4RB 620-0AH56	50	5.7	200-240△345-415Y	21.7△/12.5Y	65	68	165	-460	740	60	6.6	220-275△380-480Y	20.8△/12.0Y	137G	* 4RB 630-0AH66	50	7.5	200-240△345-415Y	27.7△/16.0Y	86	72	170	-730	1040	60	8.6	220-275△380-480Y	27.7△/16.0Y																																																																																			
123G	4RB 610-0AH36	50	3.3	200-240△345-415Y	13△/7.5Y	35	65	165	-340	480																																																																																																																																																																																																																																																																							
		60	3.8	220-275△380-480Y	14.2△/8.2Y						7G	*4RB 220-0AH26	50	0.81	200-240△345-415Y	4.0△/2.3Y	24	58	47	-370	490	60	0.94	220-275△380-480Y	4.0△/2.3Y	8G	4RB 220-0AH56	50	1.5	200-240△345-415Y	7.5△/4.3Y	28	58	47	-370	650	60	1.75	220-275△380-480Y	7.6△/4.4Y	36G	4RB 320-0AH46	50	1.1	200-240△345-415Y	5.4△/3.1Y	29	59	65	-400	480	60	1.3	220-275△380-480Y	5.4△/3.1Y	37G	4RB 320-0AH56	50	1.5	200-240△345-415Y	7.5△/4.3Y	30	59	65	-440	540	60	1.75	220-275△380-480Y	7.6△/4.4Y	66G	4RB 420-0AH26	50	1.5	200-240△345-415Y	7.5△/4.3Y	33	61	87	-480	450	60	1.75	220-275△380-480Y	7.6△/4.4Y	67G	*4RB 420-0AH56	50	3.3	200-240△345-415Y	13.0△/7.5Y	39	61	87	-500	750	60	3.8	220-275△380-480Y	13.8△/8Y	96G	4RB 520-0AH26	50	2.2	200-240△345-415Y	11.4△/6.6Y	40	64	120	-470	460	60	2.55	220-275△380-480Y	11.2△/6.5Y	97G	*4RB 520-0AH76	50	4	200-240△345-415Y	15.6△/9.0Y	51	65	120	-500	820	60	4.6	220-275△380-480Y	16.0△/9.5Y	126G	*4RB 620-0AH36	50	3.3	200-240△345-415Y	13△/7.5Y	48	67	165	-460	500	60	3.8	220-275△380-480Y	14.2△/8.2Y	127G	*4RB 620-0AH56	50	5.7	200-240△345-415Y	21.7△/12.5Y	65	68	165	-460	740	60	6.6	220-275△380-480Y	20.8△/12.0Y	137G	* 4RB 630-0AH66	50	7.5	200-240△345-415Y	27.7△/16.0Y	86	72	170	-730	1040	60	8.6	220-275△380-480Y	27.7△/16.0Y																																																																																																		
7G	*4RB 220-0AH26	50	0.81	200-240△345-415Y	4.0△/2.3Y	24	58	47	-370	490																																																																																																																																																																																																																																																																							
		60	0.94	220-275△380-480Y	4.0△/2.3Y						8G	4RB 220-0AH56	50	1.5	200-240△345-415Y	7.5△/4.3Y	28	58	47	-370	650	60	1.75	220-275△380-480Y	7.6△/4.4Y	36G	4RB 320-0AH46	50	1.1	200-240△345-415Y	5.4△/3.1Y	29	59	65	-400	480	60	1.3	220-275△380-480Y	5.4△/3.1Y	37G	4RB 320-0AH56	50	1.5	200-240△345-415Y	7.5△/4.3Y	30	59	65	-440	540	60	1.75	220-275△380-480Y	7.6△/4.4Y	66G	4RB 420-0AH26	50	1.5	200-240△345-415Y	7.5△/4.3Y	33	61	87	-480	450	60	1.75	220-275△380-480Y	7.6△/4.4Y	67G	*4RB 420-0AH56	50	3.3	200-240△345-415Y	13.0△/7.5Y	39	61	87	-500	750	60	3.8	220-275△380-480Y	13.8△/8Y	96G	4RB 520-0AH26	50	2.2	200-240△345-415Y	11.4△/6.6Y	40	64	120	-470	460	60	2.55	220-275△380-480Y	11.2△/6.5Y	97G	*4RB 520-0AH76	50	4	200-240△345-415Y	15.6△/9.0Y	51	65	120	-500	820	60	4.6	220-275△380-480Y	16.0△/9.5Y	126G	*4RB 620-0AH36	50	3.3	200-240△345-415Y	13△/7.5Y	48	67	165	-460	500	60	3.8	220-275△380-480Y	14.2△/8.2Y	127G	*4RB 620-0AH56	50	5.7	200-240△345-415Y	21.7△/12.5Y	65	68	165	-460	740	60	6.6	220-275△380-480Y	20.8△/12.0Y	137G	* 4RB 630-0AH66	50	7.5	200-240△345-415Y	27.7△/16.0Y	86	72	170	-730	1040	60	8.6	220-275△380-480Y	27.7△/16.0Y																																																																																																																	
8G	4RB 220-0AH56	50	1.5	200-240△345-415Y	7.5△/4.3Y	28	58	47	-370	650																																																																																																																																																																																																																																																																							
		60	1.75	220-275△380-480Y	7.6△/4.4Y						36G	4RB 320-0AH46	50	1.1	200-240△345-415Y	5.4△/3.1Y	29	59	65	-400	480	60	1.3	220-275△380-480Y	5.4△/3.1Y	37G	4RB 320-0AH56	50	1.5	200-240△345-415Y	7.5△/4.3Y	30	59	65	-440	540	60	1.75	220-275△380-480Y	7.6△/4.4Y	66G	4RB 420-0AH26	50	1.5	200-240△345-415Y	7.5△/4.3Y	33	61	87	-480	450	60	1.75	220-275△380-480Y	7.6△/4.4Y	67G	*4RB 420-0AH56	50	3.3	200-240△345-415Y	13.0△/7.5Y	39	61	87	-500	750	60	3.8	220-275△380-480Y	13.8△/8Y	96G	4RB 520-0AH26	50	2.2	200-240△345-415Y	11.4△/6.6Y	40	64	120	-470	460	60	2.55	220-275△380-480Y	11.2△/6.5Y	97G	*4RB 520-0AH76	50	4	200-240△345-415Y	15.6△/9.0Y	51	65	120	-500	820	60	4.6	220-275△380-480Y	16.0△/9.5Y	126G	*4RB 620-0AH36	50	3.3	200-240△345-415Y	13△/7.5Y	48	67	165	-460	500	60	3.8	220-275△380-480Y	14.2△/8.2Y	127G	*4RB 620-0AH56	50	5.7	200-240△345-415Y	21.7△/12.5Y	65	68	165	-460	740	60	6.6	220-275△380-480Y	20.8△/12.0Y	137G	* 4RB 630-0AH66	50	7.5	200-240△345-415Y	27.7△/16.0Y	86	72	170	-730	1040	60	8.6	220-275△380-480Y	27.7△/16.0Y																																																																																																																																
36G	4RB 320-0AH46	50	1.1	200-240△345-415Y	5.4△/3.1Y	29	59	65	-400	480																																																																																																																																																																																																																																																																							
		60	1.3	220-275△380-480Y	5.4△/3.1Y						37G	4RB 320-0AH56	50	1.5	200-240△345-415Y	7.5△/4.3Y	30	59	65	-440	540	60	1.75	220-275△380-480Y	7.6△/4.4Y	66G	4RB 420-0AH26	50	1.5	200-240△345-415Y	7.5△/4.3Y	33	61	87	-480	450	60	1.75	220-275△380-480Y	7.6△/4.4Y	67G	*4RB 420-0AH56	50	3.3	200-240△345-415Y	13.0△/7.5Y	39	61	87	-500	750	60	3.8	220-275△380-480Y	13.8△/8Y	96G	4RB 520-0AH26	50	2.2	200-240△345-415Y	11.4△/6.6Y	40	64	120	-470	460	60	2.55	220-275△380-480Y	11.2△/6.5Y	97G	*4RB 520-0AH76	50	4	200-240△345-415Y	15.6△/9.0Y	51	65	120	-500	820	60	4.6	220-275△380-480Y	16.0△/9.5Y	126G	*4RB 620-0AH36	50	3.3	200-240△345-415Y	13△/7.5Y	48	67	165	-460	500	60	3.8	220-275△380-480Y	14.2△/8.2Y	127G	*4RB 620-0AH56	50	5.7	200-240△345-415Y	21.7△/12.5Y	65	68	165	-460	740	60	6.6	220-275△380-480Y	20.8△/12.0Y	137G	* 4RB 630-0AH66	50	7.5	200-240△345-415Y	27.7△/16.0Y	86	72	170	-730	1040	60	8.6	220-275△380-480Y	27.7△/16.0Y																																																																																																																																															
37G	4RB 320-0AH56	50	1.5	200-240△345-415Y	7.5△/4.3Y	30	59	65	-440	540																																																																																																																																																																																																																																																																							
		60	1.75	220-275△380-480Y	7.6△/4.4Y						66G	4RB 420-0AH26	50	1.5	200-240△345-415Y	7.5△/4.3Y	33	61	87	-480	450	60	1.75	220-275△380-480Y	7.6△/4.4Y	67G	*4RB 420-0AH56	50	3.3	200-240△345-415Y	13.0△/7.5Y	39	61	87	-500	750	60	3.8	220-275△380-480Y	13.8△/8Y	96G	4RB 520-0AH26	50	2.2	200-240△345-415Y	11.4△/6.6Y	40	64	120	-470	460	60	2.55	220-275△380-480Y	11.2△/6.5Y	97G	*4RB 520-0AH76	50	4	200-240△345-415Y	15.6△/9.0Y	51	65	120	-500	820	60	4.6	220-275△380-480Y	16.0△/9.5Y	126G	*4RB 620-0AH36	50	3.3	200-240△345-415Y	13△/7.5Y	48	67	165	-460	500	60	3.8	220-275△380-480Y	14.2△/8.2Y	127G	*4RB 620-0AH56	50	5.7	200-240△345-415Y	21.7△/12.5Y	65	68	165	-460	740	60	6.6	220-275△380-480Y	20.8△/12.0Y	137G	* 4RB 630-0AH66	50	7.5	200-240△345-415Y	27.7△/16.0Y	86	72	170	-730	1040	60	8.6	220-275△380-480Y	27.7△/16.0Y																																																																																																																																																														
66G	4RB 420-0AH26	50	1.5	200-240△345-415Y	7.5△/4.3Y	33	61	87	-480	450																																																																																																																																																																																																																																																																							
		60	1.75	220-275△380-480Y	7.6△/4.4Y						67G	*4RB 420-0AH56	50	3.3	200-240△345-415Y	13.0△/7.5Y	39	61	87	-500	750	60	3.8	220-275△380-480Y	13.8△/8Y	96G	4RB 520-0AH26	50	2.2	200-240△345-415Y	11.4△/6.6Y	40	64	120	-470	460	60	2.55	220-275△380-480Y	11.2△/6.5Y	97G	*4RB 520-0AH76	50	4	200-240△345-415Y	15.6△/9.0Y	51	65	120	-500	820	60	4.6	220-275△380-480Y	16.0△/9.5Y	126G	*4RB 620-0AH36	50	3.3	200-240△345-415Y	13△/7.5Y	48	67	165	-460	500	60	3.8	220-275△380-480Y	14.2△/8.2Y	127G	*4RB 620-0AH56	50	5.7	200-240△345-415Y	21.7△/12.5Y	65	68	165	-460	740	60	6.6	220-275△380-480Y	20.8△/12.0Y	137G	* 4RB 630-0AH66	50	7.5	200-240△345-415Y	27.7△/16.0Y	86	72	170	-730	1040	60	8.6	220-275△380-480Y	27.7△/16.0Y																																																																																																																																																																													
67G	*4RB 420-0AH56	50	3.3	200-240△345-415Y	13.0△/7.5Y	39	61	87	-500	750																																																																																																																																																																																																																																																																							
		60	3.8	220-275△380-480Y	13.8△/8Y						96G	4RB 520-0AH26	50	2.2	200-240△345-415Y	11.4△/6.6Y	40	64	120	-470	460	60	2.55	220-275△380-480Y	11.2△/6.5Y	97G	*4RB 520-0AH76	50	4	200-240△345-415Y	15.6△/9.0Y	51	65	120	-500	820	60	4.6	220-275△380-480Y	16.0△/9.5Y	126G	*4RB 620-0AH36	50	3.3	200-240△345-415Y	13△/7.5Y	48	67	165	-460	500	60	3.8	220-275△380-480Y	14.2△/8.2Y	127G	*4RB 620-0AH56	50	5.7	200-240△345-415Y	21.7△/12.5Y	65	68	165	-460	740	60	6.6	220-275△380-480Y	20.8△/12.0Y	137G	* 4RB 630-0AH66	50	7.5	200-240△345-415Y	27.7△/16.0Y	86	72	170	-730	1040	60	8.6	220-275△380-480Y	27.7△/16.0Y																																																																																																																																																																																												
96G	4RB 520-0AH26	50	2.2	200-240△345-415Y	11.4△/6.6Y	40	64	120	-470	460																																																																																																																																																																																																																																																																							
		60	2.55	220-275△380-480Y	11.2△/6.5Y						97G	*4RB 520-0AH76	50	4	200-240△345-415Y	15.6△/9.0Y	51	65	120	-500	820	60	4.6	220-275△380-480Y	16.0△/9.5Y	126G	*4RB 620-0AH36	50	3.3	200-240△345-415Y	13△/7.5Y	48	67	165	-460	500	60	3.8	220-275△380-480Y	14.2△/8.2Y	127G	*4RB 620-0AH56	50	5.7	200-240△345-415Y	21.7△/12.5Y	65	68	165	-460	740	60	6.6	220-275△380-480Y	20.8△/12.0Y	137G	* 4RB 630-0AH66	50	7.5	200-240△345-415Y	27.7△/16.0Y	86	72	170	-730	1040	60	8.6	220-275△380-480Y	27.7△/16.0Y																																																																																																																																																																																																											
97G	*4RB 520-0AH76	50	4	200-240△345-415Y	15.6△/9.0Y	51	65	120	-500	820																																																																																																																																																																																																																																																																							
		60	4.6	220-275△380-480Y	16.0△/9.5Y						126G	*4RB 620-0AH36	50	3.3	200-240△345-415Y	13△/7.5Y	48	67	165	-460	500	60	3.8	220-275△380-480Y	14.2△/8.2Y	127G	*4RB 620-0AH56	50	5.7	200-240△345-415Y	21.7△/12.5Y	65	68	165	-460	740	60	6.6	220-275△380-480Y	20.8△/12.0Y	137G	* 4RB 630-0AH66	50	7.5	200-240△345-415Y	27.7△/16.0Y	86	72	170	-730	1040	60	8.6	220-275△380-480Y	27.7△/16.0Y																																																																																																																																																																																																																										
126G	*4RB 620-0AH36	50	3.3	200-240△345-415Y	13△/7.5Y	48	67	165	-460	500																																																																																																																																																																																																																																																																							
		60	3.8	220-275△380-480Y	14.2△/8.2Y						127G	*4RB 620-0AH56	50	5.7	200-240△345-415Y	21.7△/12.5Y	65	68	165	-460	740	60	6.6	220-275△380-480Y	20.8△/12.0Y	137G	* 4RB 630-0AH66	50	7.5	200-240△345-415Y	27.7△/16.0Y	86	72	170	-730	1040	60	8.6	220-275△380-480Y	27.7△/16.0Y																																																																																																																																																																																																																																									
127G	*4RB 620-0AH56	50	5.7	200-240△345-415Y	21.7△/12.5Y	65	68	165	-460	740																																																																																																																																																																																																																																																																							
		60	6.6	220-275△380-480Y	20.8△/12.0Y						137G	* 4RB 630-0AH66	50	7.5	200-240△345-415Y	27.7△/16.0Y	86	72	170	-730	1040	60	8.6	220-275△380-480Y	27.7△/16.0Y																																																																																																																																																																																																																																																								
137G	* 4RB 630-0AH66	50	7.5	200-240△345-415Y	27.7△/16.0Y	86	72	170	-730	1040																																																																																																																																																																																																																																																																							
		60	8.6	220-275△380-480Y	27.7△/16.0Y																																																																																																																																																																																																																																																																												

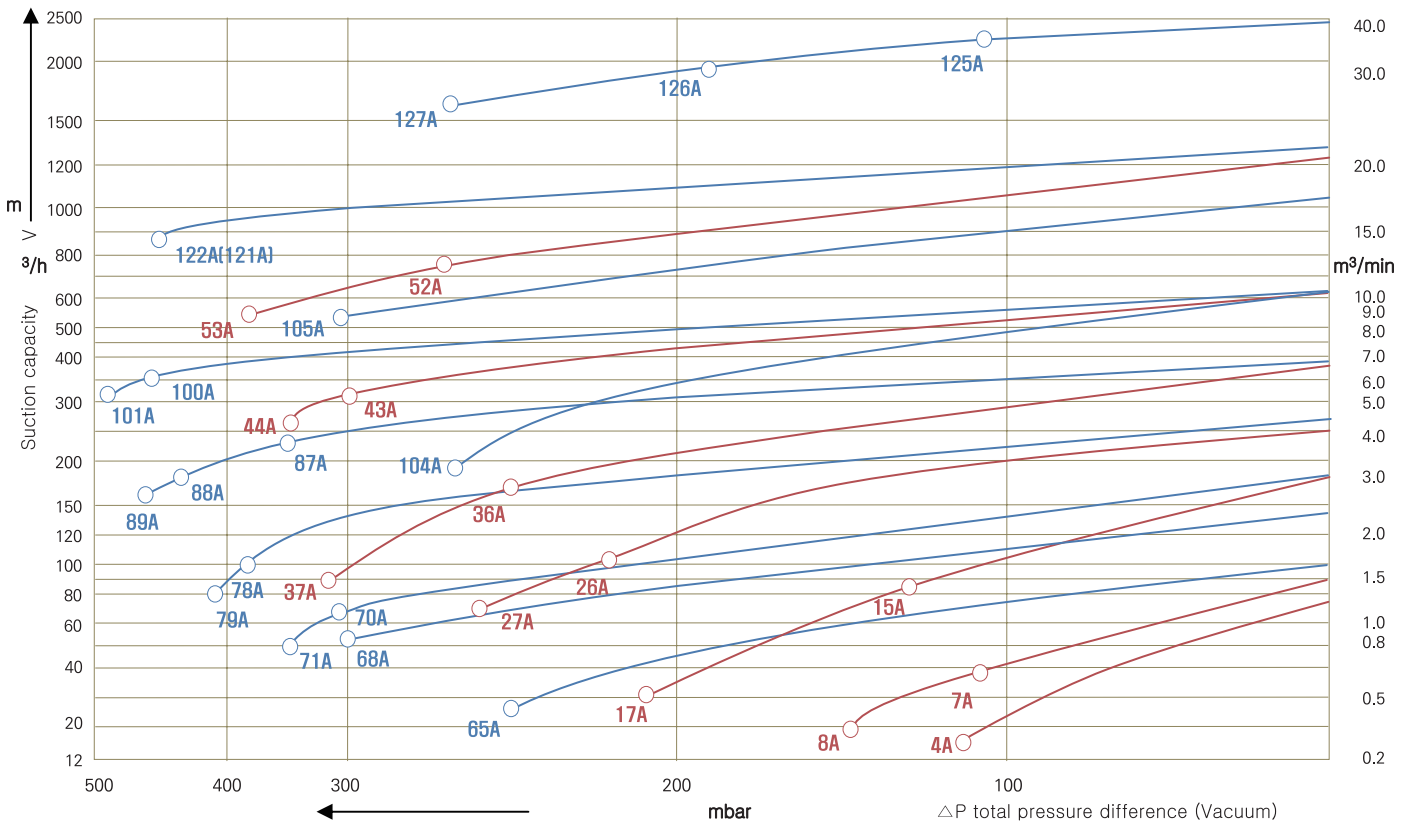
※ 제품 사양은 성능 향상을 위해 예고 없이 변경될 수 있습니다.

성능곡선 (삼상 60Hz) 2RB 시리즈

토출용 (Compressor)



흡입용 (Vacuum)



본 성능은 흡입구에서 압력이 1013 mbar 이고 토출구에서 공기온도가 15 °C 일 때를 기준으로 한 것입니다. 허용 오차는 $\pm 10\%$.
총 압력차는 주변 온도가 25 °C 일 때의 수치입니다.

사양 (삼상) 2RB 시리즈

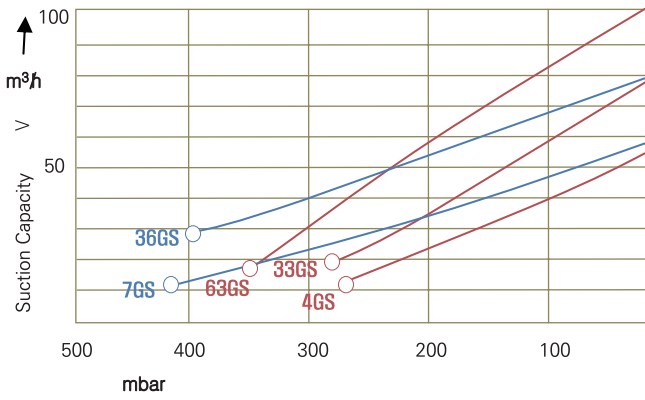
곡선번호	모델번호 *재고품	모터				중량	소음도	최대유량	최대 흡입압력	최대 토출압력
		주파수	사양							
			출력	전압	전류					
		Hz	kw	V	A					
4A	*2RB 010-7AH16	50	0.2	200-240△345-415Y	1.75△/1.0Y	5	46	55	-80	90
		60	0.23	220-275△380-480Y	1.75△/1.0Y		48	70	-110	120
7A	2RB 210-7AH06	50	0.25	200-240△345-415Y	2.1△/1.2Y	9	53	80	-100	110
		60	0.29	220-275△380-480Y	2.0△/1.15Y		56	98	-110	120
8A	*2RB 210-7AH16	50	0.4	200-240△345-415Y	2.6△/1.5Y	10	53	80	-120	130
		60	0.5	220-275△380-480Y	2.6△/1.5Y		56	98	-150	160
15A	*2RB 410-7AH06	50	0.7	200-240△345-415Y	3.8△/1.2Y	13	63	145	-120	120
		60	0.83	220-275△380-480Y	3.75△/2.15Y		64	175	-130	130
17A	*2RB 410-7AH26	50	1.3	200-240△345-415Y	5.7△/3.3Y	17	63	145	-170	200
		60	1.5	220-275△380-480Y	6.0△/3.5Y		64	175	-210	220
26A	*2RB 510-7AH26	50	1.6	200-240△345-415Y	7.5△/4.3Y	23	64	210	-200	190
		60	2.05	220-275△380-480Y	7.6△/4.4Y		70	255	-220	210
27A	*2RB 510-7AH36	50	2.2	200-240△345-415Y	9.7△/5.6Y	25	64	210	-220	270
		60	2.55	220-275△380-480Y	10.3△/6.0Y		70	255	-260	290
36A	*2RB 710-7AH26	50	3.0	200-240△345-415Y	12.5△/7.2Y	36	69	318	-270	290
		60	3.45	220-275△380-480Y	12.6△/7.3Y		72	376	-250	230
37A	*2RB 710-7AH36	50	4.0	200-240△345-415Y	15.6△/9.0Y	40	69	318	-290	330
		60	4.6	220-275△380-480Y	15.6△/9.0Y		72	376	-330	330
43A	*2RB 810-7AH16	50	5.5	200-240△345-415Y	22.3△/12.9Y	63	70	530	-300	300
		60	6.3	220-275△380-480Y	22.3△/12.9Y		74	620	-300	280
44A	*2RB 810-7AH26	50	7.5	200-240△345-415Y	28.9△/16.7Y	66	70	530	-320	430
		60	8.6	220-275△380-480Y	30.0△/17.3Y		74	620	-350	400
52A	*2RB 910-7AH16	50	12.5	200-240△345-415Y	48.5△/28.0Y	116	74	1050	-280	270
		60	14.5	220-275△380-480Y	50.2△/29.0Y		79	1250	-270	260
53A	*2RB 920-7AH36	50	18.5	200-240△345-415Y	64.1△/37.0Y	126	74	1050	-340	460
		60	21.3	220-275△380-480Y	67.5△/39.0Y		79	1250	-380	420
65A	2RB 220-7HH26	50	0.7	200-240△345-415Y	3.8△/2.2Y	15	55	85	-210	240
		60	0.83	220-275△380-480Y	3.75△/2.15Y		61	102	-250	250
68A	2RB 320-7HH36	50	1.3	200-240△345-415Y	5.7△/3.3Y	18	58	110	-280	290
		60	1.5	220-275△380-480Y	6.0△/3.5Y		60	130	-300	400
70A	*2RB 420-7HH36	50	1.6	200-240△345-415Y	7.5△/4.3Y	25	66	150	-280	280
		60	2.05	220-275△380-480Y	7.6△/4.4Y		69	180	-320	310
71A	*2RB 420-7HH46	50	2.2	200-240△345-415Y	9.7△/5.6Y	27	66	150	-330	440
		60	2.55	220-275△380-480Y	10.0△/5.8Y		69	180	-350	420
78A	*2RB 520-7HH46	50	3.0	200-240△345-415Y	12.5△/7.2Y	40	72	230	-340	410
		60	3.45	220-275△380-480Y	12.6△/7.3Y		74	275	-380	360
79A	*2RB 520-7HH56	50	4.0	200-240△345-415Y	17.3△/10.0Y	44	72	230	-390	490
		60	4.6	220-275△380-480Y	17.1△/9.9Y		74	275	-410	480
87A	*2RB 720-7HH36	50	4.3	200-240△345-415Y	17.3△/10.0Y	54	73	320	-360	380
		60	4.8	220-275△380-480Y	18.0△/10.4Y		76	380	-350	320
88A	*2RB 720-7HH46	50	5.5	200-240△345-415Y	23.0△/13.3Y	66	73	320	-440	500
		60	6.3	220-275△380-480Y	23.0△/13.3Y		76	380	-440	500
89A	*2RB 720-7HH56	50	7.5	200-240△345-415Y	28.9△/16.7Y	73	73	320	-440	570
		60	8.6	220-275△380-480Y	30.0△/17.3Y		76	380	-460	660
104A	*2RB 740-7GH56	50	7.5	200-240△345-415Y	28.9△/16.7Y	75	74	500	-240	320
		60	8.6	220-275△380-480Y	30.0△/17.3Y		78	600	-270	300
100A	2RB 820-7HH36	50	11.0	200-240△345-415Y	48.5△/28.0Y	104	74	520	-430	600
		60	12.6	220-275△380-480Y	50.2△/29.0Y		78	620	-460	600
105A	2RB 840-7GH36	50	11.0	200-240△345-415Y	48.5△/28.0Y	110	74	900	-280	370
		60	12.6	220-275△380-480Y	50.2△/29.0Y		78	1050	-310	350
101A	2RB 820-7HH46	50	15.0	200-240△345-415Y	56.3△/32.5Y	120	74	520	-460	670
		60	17.3	220-275△380-480Y	59.8△/34.5Y		78	620	-490	750
121A	2RB 920-7HH36	50	20.0	200-240△345-415Y	69.3△/40.0Y	204	74	1110	-440	500
		60	23.0	220-275△380-480Y	72.7△/42.0Y		84	1310	-440	430
122A	2RB 920-7HH46	50	25.0	200-240△345-415Y	90.1△/52.0Y	211	74	1110	-450	590
		60	29.0	220-275△380-480Y	90.1△/52.0Y		84	1310	-450	540
125A	2RB 943-7BH26	50	15.0	200-240△345-415Y	60.6△/35.0Y	220	75	2050	-160	170
		60	17.5	220-275△380-480Y	63.2△/36.5Y		84	2480	-110	120
126A	2RB 943-7BH36	50	20.0	200-240△345-415Y	69.3△/40.0Y	230	75	2050	-250	230
		60	23.0	220-275△380-480Y	72.7△/42.0Y		84	2480	-190	180
127A	2RB 943-7BH46	50	25.0	200-240△345-415Y	90.1△/52.0Y	235	75	2050	-310	270
		60	29.0	220-275△380-480Y	90.1△/52.0Y		84	2480	-270	230

※ 제품 사양은 성능 향상을 위해 예고 없이 변경될 수 있습니다.

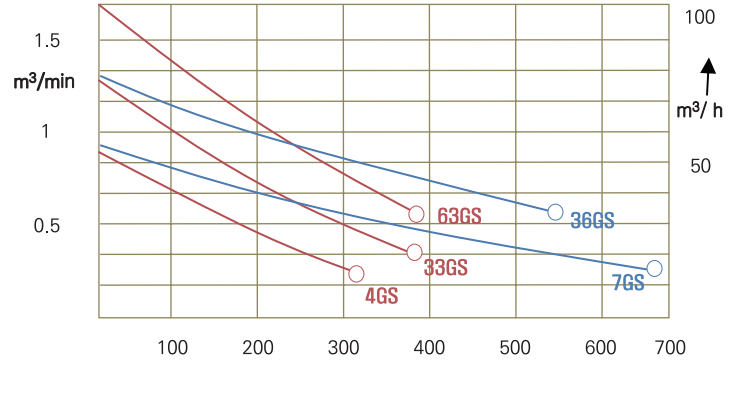
성능곡선 (단상 60Hz) 4RB & 2RB 시리즈

4RB 단상

흡입용 (Vacuum)



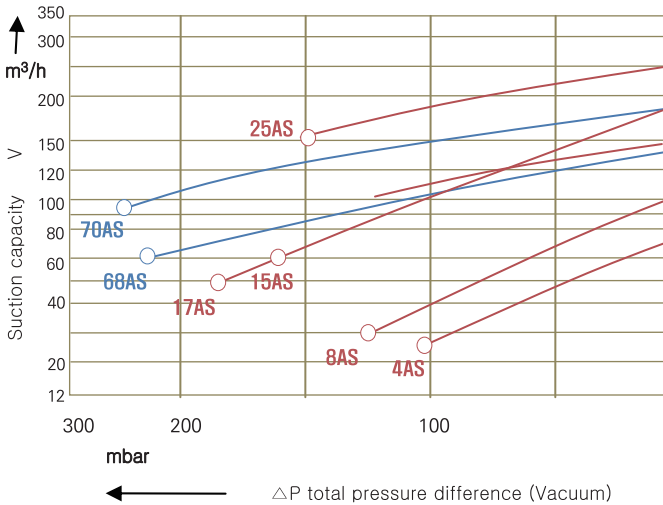
토출용 (Compressor)



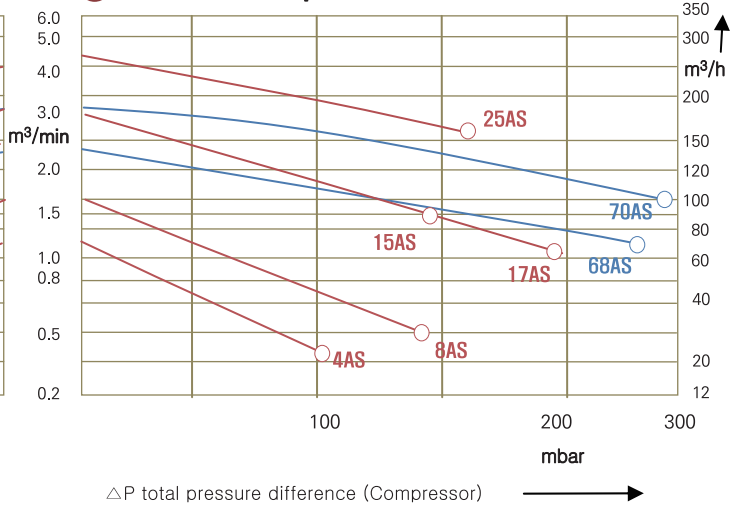
본 성능은 흡입구에서 압력이 1013 mbar 이고 토출구에서 공기온도가 15 °C 일 때를 기준으로 한 것입니다. 허용 오차는 ±10%. 총 압력차는 주변 온도가 25 °C 일 때의 수치입니다.

2RB 단상

흡입용 (Vacuum)



토출용 (Compressor)



본 성능은 흡입구에서 압력이 1013 mbar 이고 토출구에서 공기온도가 15 °C 일 때를 기준으로 한 것입니다. 허용 오차는 ±10%. 총 압력차는 주변 온도가 25 °C 일 때의 수치입니다.

사양 (단상) 4RB & 2RB 시리즈

4RB 단상

곡선번호	모델번호	모터				중량	소음도	최대유량	최대 흡입압력	최대 토출압력
		주파수	사양							
			출력	전압	전류					
Hz	kW	V	A	kg	dB(A)	m ³ /h	mbar	mbar		
4GS	4RB 210-0AV75	50	0.55	230	3.1	18	57	47	-230	290
		60	0.63	230	7.1					
33GS	4RB 310-0AV75	50	0.94	230	7.6	18	57	66	-250	350
		60	1.1	230	9					
63GS	4RB 410-0AV45	50	1.1	230	10.1	23	58	87	-300	380
		60	1.3	230	10.3					
7GS	4RB 220-0AV75	50	1.5	230	9.7	30	58	47	-370	600
		60	1.75	230	10.3					
36GS	4RB 320-0AV75	50	1.5	230	9.7	32	59	65	-400	550
		60	1.75	230	10.3					

※ 제품 사양은 성능 향상을 위해 예고 없이 변경될 수 있습니다.

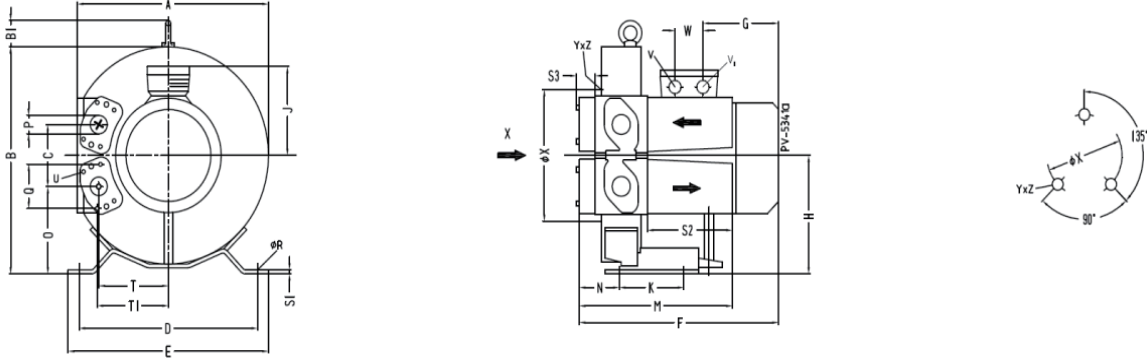
2RB 단상

곡선번호	모델번호 *재고품	모터				중량	소음도	최대유량	최대 흡입압력	최대 토출압력
		주파수	사양							
			출력	전압	전류					
Hz	kW	V	A	kg	dB(A)	m ³ /h	mbar	mbar		
4AS	*2RB 010-7AA11	50	0.2	230	1.5	5	46	55	-80	90
		60	0.23	230	1.6					
8AS	*2RB 210-7AV11	50	0.37	230	2.7	11	53	80	-110	110
		60	0.45	230	3.0					
15AS	*2RB 410-7AV11	50	0.8	230	5.2	15	63	145	-150	160
		60	0.9	230	5.8					
17AS	*2RB 410-7AV21	50	1.1	230	7.3	16	63	145	-150	190
		60	1.3	230	8.3					
25AS	2RB 510-7AV11	50	1.1	230	7.3	21	64	210	-160	160
		60	1.3	230	8.3					
68AS	2RB 320-7AV31	50	1.1	230	7.3	17	58	120	-240	280
		60	1.3	230	8.3					
70AS	2RB 420-7AV31	50	1.5	230	9.0	26	66	150	-280	290
		60	1.75	230	10.0					

※ 제품 사양은 성능 향상을 위해 예고 없이 변경될 수 있습니다.

외형도 4RB 시리즈

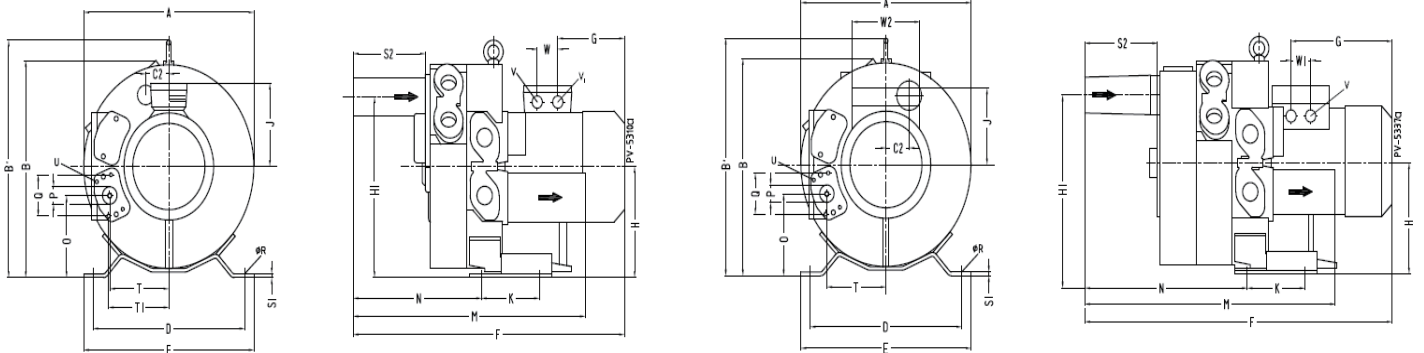
4RB 210./4RB 310./4RB 410./4RB510./4RB610.



Type	Phase	Dimensions																								
		A	B	B1	C	D	E	F	G	H	J	K	M	N	O	P	Q	ΦR	T	T1	U	V	V1	W	ΦX	YzZ
4RB210-0AH16	3	294	319	39	87	260	298	293	129	167	111	105	252	65	124	G11/4 (18 deep)	64	14	105	107	M6X17	M25X1.5	M16X1.5	32	153	M6X15
4RB210-0AV75	1																									
4RB310-0AH16	3	313	339		94	290	325	295	153	177	120		256	67	130				114	116						
4RB410-0AH16	3	346	375	38	103	315	350	321		195		130	260	66	143				125	127					167	
4RB410-0AV45	1																									
4RB510-0AH16	3	368	395	39	114	328	363	361	185	205	128	152	265	68	148				137	138					192	M8X15
4RB510-0AH26	3																									
4RB610-0AH16	3	418	455		127	371	406	364		235			271	72	172				153	155					228	
4RB610-0AH36	3							390	211																	

4RB 220./4RB 320./4RB 420./4RB520./4RB620.

4RB 630.

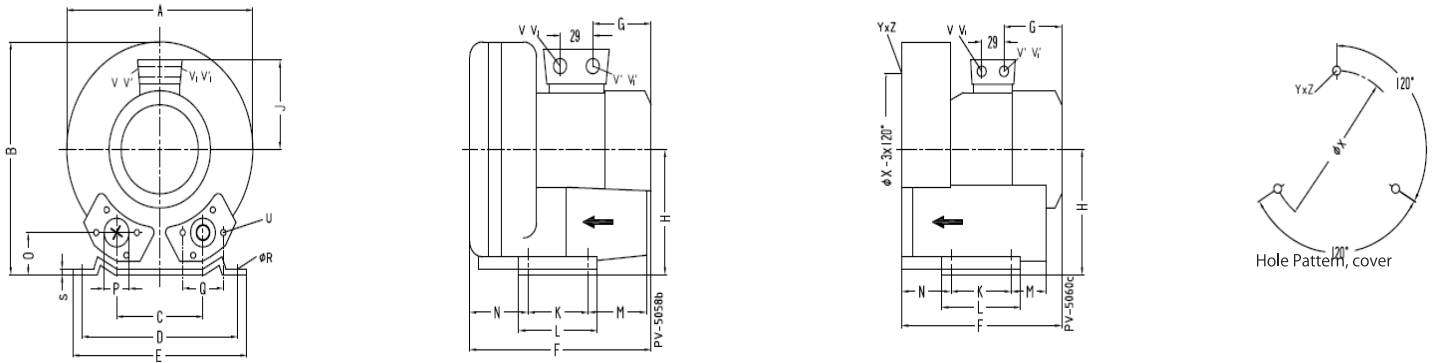


Type	Phase	Dimensions																							
		A	B	B'	C2	D	E	F	G	H	H1	J	K	M	N	O	P	Q	ΦR	T	T1	U	V	V1	W
4RB220-0AH26	3	313	326	359	43	260	298	469	130	167	272	111	105	426	241	123	G11/4 (18 deep)	64	14	105	107	M6X17	M25X1.5	M16X1.5	32
4RB220-0AH56	3							525	185			128													
4RB220-0AV75	1																								
4RB320-0AH46	3	331	345	380	47	290	325	390	153	177	291	120		431	243	130			114	116					
4RB320-0AH56	3							421	185			128													
4RB320-0AV75	1																								
4RB420-0AH26	3	363	377	414	52	315	350	529	180	195	319	128	130	436		143			125	127					
4RB420-0AH56	3							554	211																
4RB520-0AH26	3	387	402	435	57	328	363	549	185	206	343	128	152	453	256	148			137	138					42
4RB520-0AH76	3							603	211			148											2xM32X1.5		32
4RB620-0AH36	3	442	457	495	63	372	406	578		236	389	128		458	259	173			153	155			M25X1.5		42
4RB620-0AH56	3							643	248			148											2xM32X1.5		

Type	Phase	A	B	B'	C2	D	E	F	G	H	H1	K	M	N	O	P	Q	ΦR	T	U	V	W1	W2
4RB630-0AH66	3	442	402	492	63	371	406	717	274	236	389	152	539	336	172	G11/4 (15 deep)	64	14	153	M6X17	M32X1.5	42	120

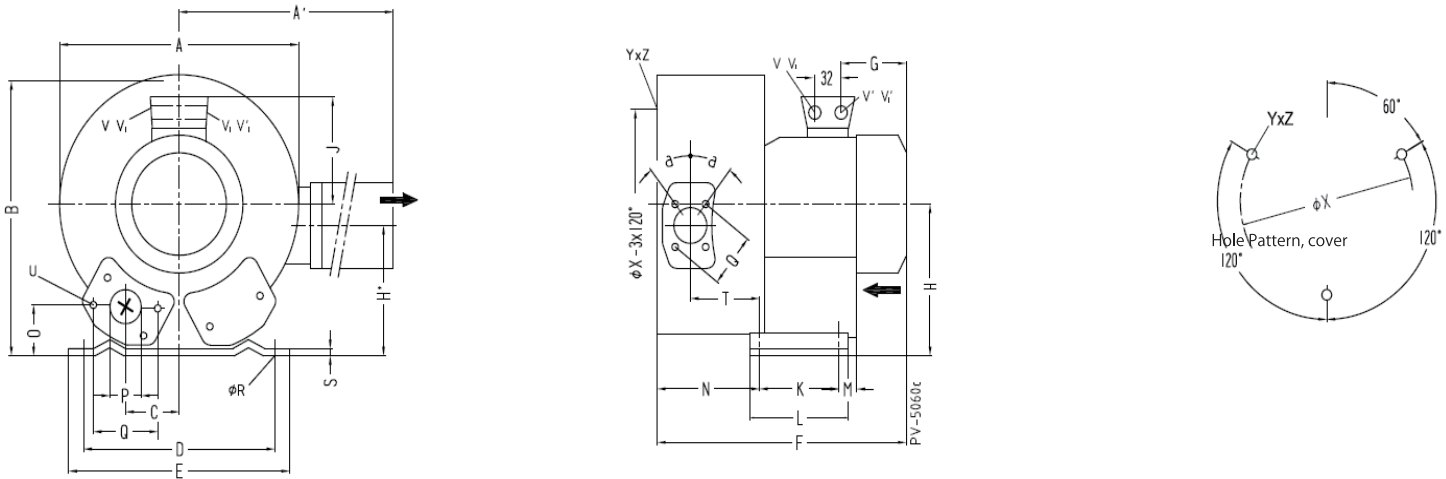
외형도 2RB 2,3,4 시리즈

2RB 210./2RB 410.



Type	Phase																											
		A	B	C	D	E	F	G	H	J	K	L	M	N	O	P	Q	ΦR	S	U	V(1~)	V'(1~)	V(3~)	V'(3~)	YxZ	ΦX		
2RB210-7AH16	3																											
2RB210-7AV11	1																											
2RB410-7AV11	1	286	302	115	225	255	294	160	154	120	95	130	70	75	46	G1/2 1.5 deep	72	12	3	M16X1.9	M16X1.5	M25X1.5						174
2RB410-7AH21	1																											
2RB410-7AH06	3						269	115		111																		
2RB410-7AH26	3						292	160		120																		

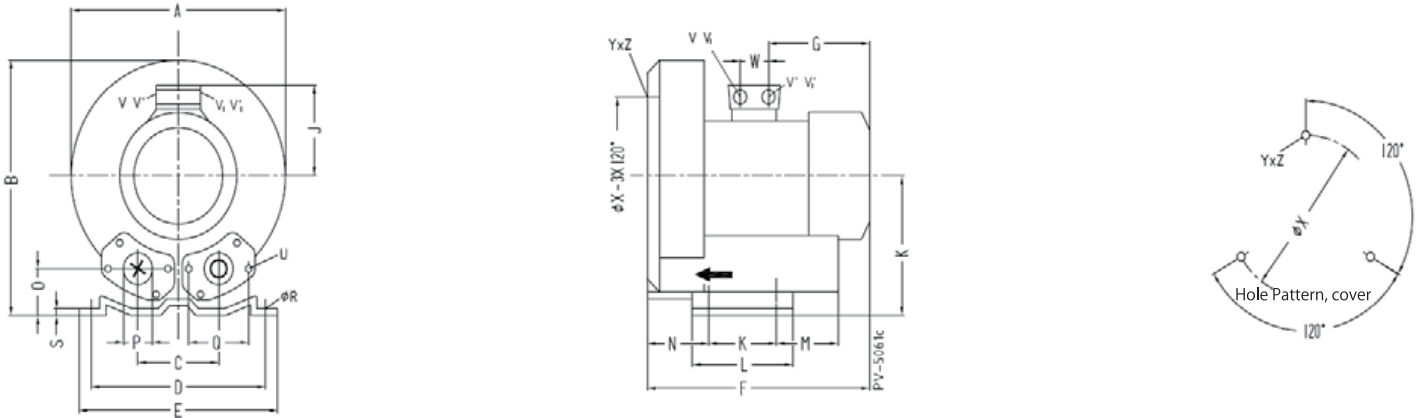
2RB 220./2RB 320. / 2RB 420.



Type	Phase																													
		A	A'	B	C	D	E	F	G	H	H'	J	K	L	M	N	O	P	Q	ΦR	S	T	U	V(1~)	V'(1~)	V(3~)	V'(3~)	α	ΦX	YxZ
2RB320-7HH36	3	293	324	286	47			354	160	141	114	120		82	138	41						92								160
2RB320-7AV31	1																								M25X1.5	M16X1.5				
2RB420-7HH36	3	322	324	315	58	225	255	401	191	154	153	128	95	130	73	151	45	G1/2 1.5 deep	72	12	3	104	M6X1.9			M25X1.5	M16X1.5	28°	174	
2RB420-7HH46	3																													
2RB420-7AV31	1																													

외형도 2RB 5,7 시리즈

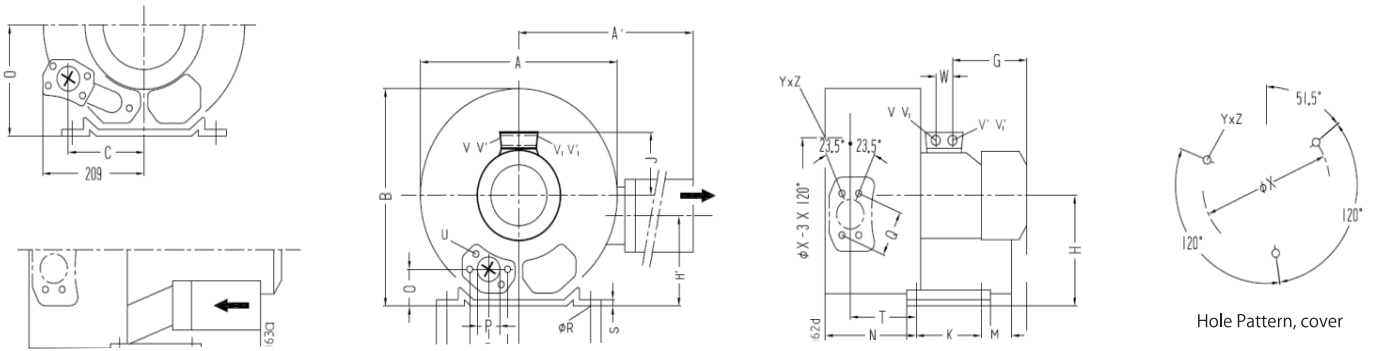
2RB 510./ 2RB710.



Type	Phase																												
		A	B	C	D	E	F	G	H	J	K	L	M	N	O	ΦP	Q	ΦR	S	U	V(1~)	V'(1~)	V(3~)	V'(3~)	YxZ	ΦX	W		
2RB510-7AV11	1	334	337	120	260	295	314	160	175	120	115	155	96	87	48	55	83	14	4	M8x17	M16x1.5	M25x1.5			M8x20	200	29		
2RB510-7AH26	3						346	191		128												M25x1.5	M16x1.5						
2RB510-7AH36	3																												
2RB710-7AH26	3	382	384	125	290	325	409	188	197	135	140	180	84	109	54	55	83	15	4.5						M32x1.5	M32x1.5	M10x20	240	42
2RB710-7AH36	3						432	209		148																			

2RB 720.-...4./-...5.

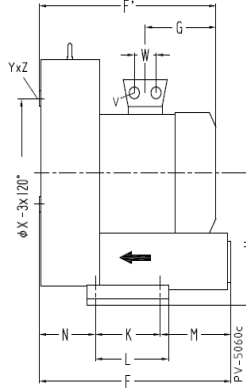
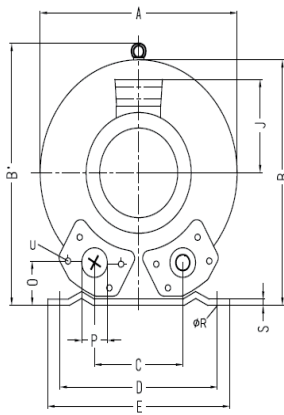
2RB 520./2RB 720.-...3.



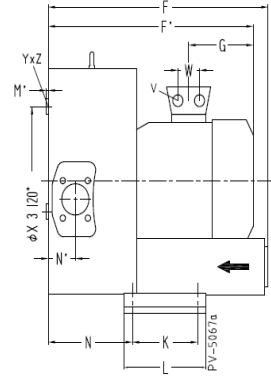
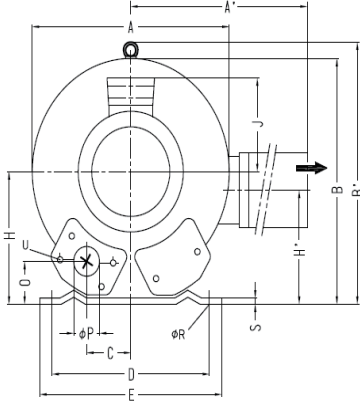
Type	Phase																													
		A	A'	B	C	D	E	F	G	H	H'	J	K	L	M	N	O	ΦP	Q	ΦR	S	T	U	V	V'	V1	V1'	ΦX	YxZ	W
2RB520-7HH46	3	372	411	371	60	260	295	465	190	175	144	135	115	155	98	171	48	55	83	14	4	116	M8x17	M32x1.5	M32x1.5	M32x1.5	M32x1.5	200	M8x20	42
2RB520-7HH56	3							499	224																					
2RB720-7HH36	3	426	426	410	63	290	325	526	209	197	162	148	140	180	84	205	53			15	4.5	130		M32x1.5	M32x1.5	M32x1.5	M32x1.5			
2RB720-7HH46	3				154			571	226			167			200															
2RB720-7HH56	3																													

외형도 2RB 8, 740 & 840 시리즈

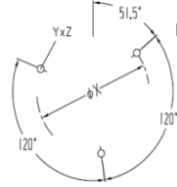
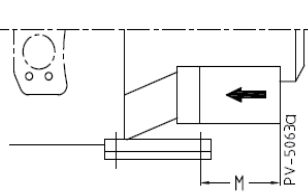
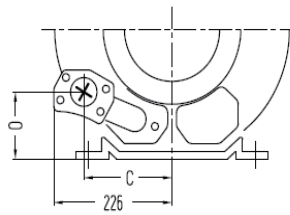
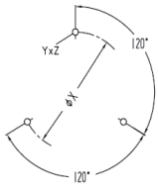
2RB 810.



2RB 820.



Hole Pattern, cover

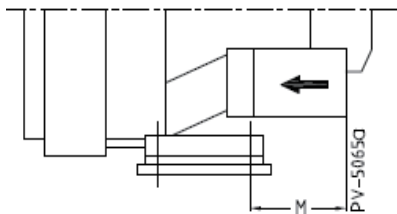
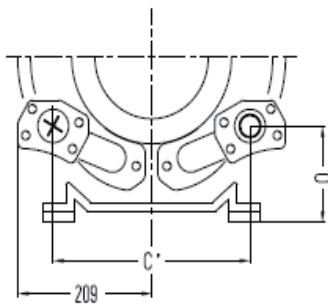


Hole Pattern, cover

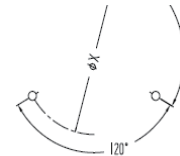
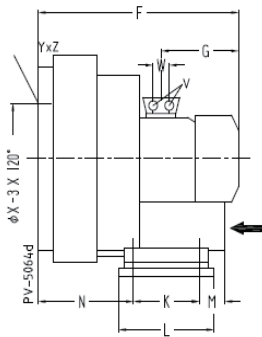
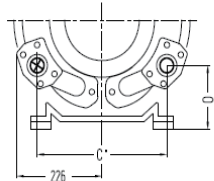
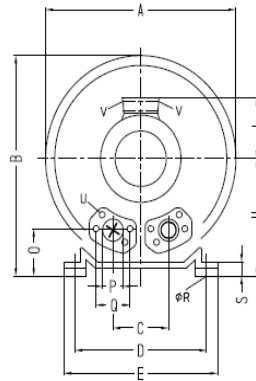
51.4

Type	Phase	Dimensions (mm)																		O	ΦP	ΦR	S	V	W	ΦX	YxZ
		A	A'	B	B'	C	D	E	F	F'	G	H	H'	J	K	L	M	N	N'								
2RB810-7AH16	3	451		461	509	152	356	394	433	477	226	240		167	170	217	140	124		65	G21/2	15	6	4x M32x1.5	42	286	M12x20
2RB810-7AH26	3																										
2RB820-7HH36	3	500	549	490	509	76			545	694	318		199	197					212	84	105			4x M40x1.5	54		
2RB820-7HH46	3																										

2RB 740.



2RB 840.

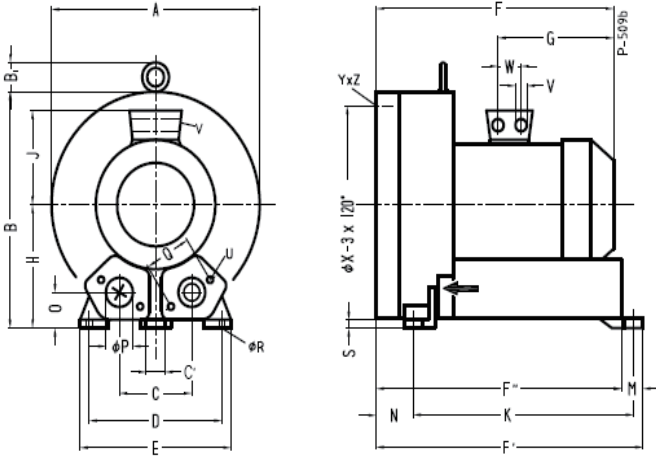


Hole Pattern, cover

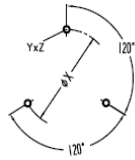
Type	Phase	Dimensions (mm)																		Q	ΦR	S	U	V	W	ΦX	YxZ
		A	B	C	C'	D	E	F	G	H	J	K	L	M	N	O	ΦP										
2RB740-7GH56	3	420	410	-	308	290	325	571	226	257	167	140	180	200	205	153	55	83	15	64.5	M8x17	4x M32x1.5	-	240	M10x20		
2RB840-7GH36	3	500	550	-	336	356	394	694	318	300	197	170	217	312	212	165	G21/2	-	66		4x M40x1.5	54	286	M12x20			

외형도 2RB 9, 943 시리즈

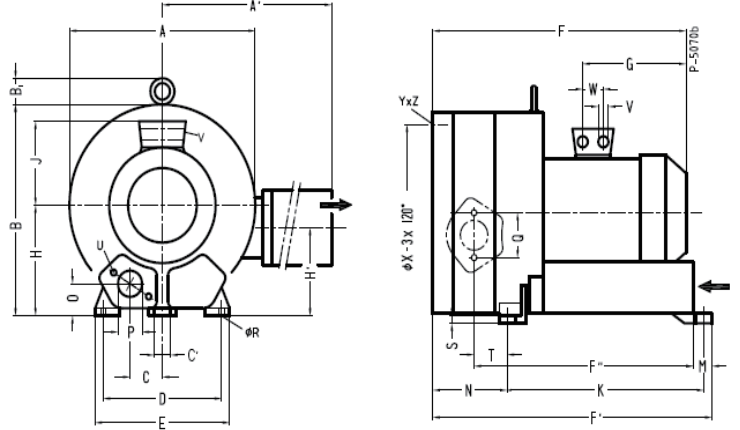
2RB 910.



Hole Pattern, cover



2RB 920.



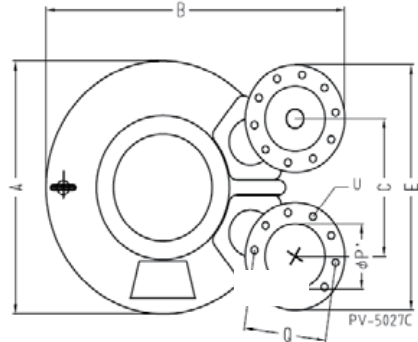
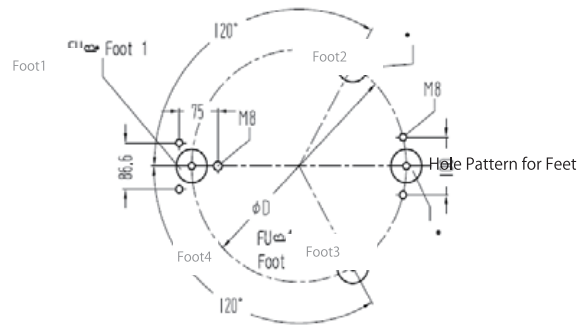
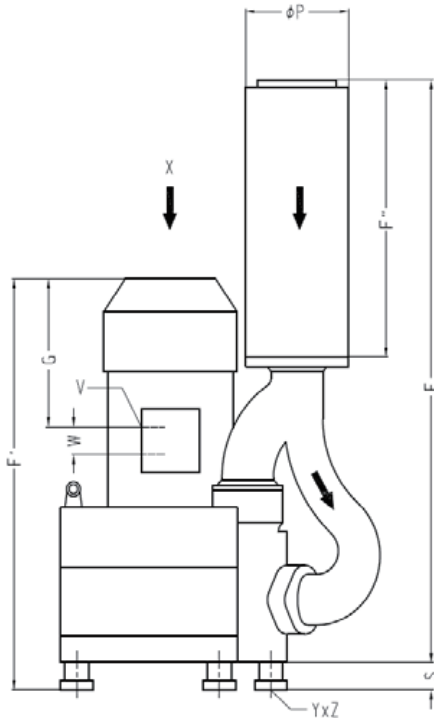
Hole Pattern, cover



Type	Phase	A	B	B1	C	C'	D	E	F	F'	F''	G	H	J	K	M	N	O	ΦP	Q	ΦR	S	U	V	W	ΦX	YxZ
2RB910-7AH16	3	550	569	55	207	15	360	415	611	644	605	345	300	197	533	39	89	92	100	150	15	21	M12x30	4x M40x1.5	54	490	M12x30
2RB910-7AH36	3																										

Type	Phase	A	A'	B	B1	C	C'	D	E	F	F'	F''	G	H	H'	J	K	M	N	O	ΦP	Q	ΦR	S	T	U	V	W	ΦX	YxZ
2RB920-7HH36	3	615	780	607	16	103.5	15	360	415	752	786	634	345	300	234	197	533	39	230	92	100	150	15	21	117	M12x30	4x M40x1.5	54	490	M12x30
2RB920-7HH46	3									812																				

2RB 943.



Type	Phase	A	B	C	D	E	F	F'	F''	G	P	P'	Q	S	U	V	W	YxZ
2RB943-7BH26	3	615	723	307	490	526	1201	848	578	291	219	135	201	58	M8x40	4x M40x1.5	54	M12x10.5
2RB943-7BH36	3																	
2RB943-7BH46	3							908		351								

부품 4RB & 2RB 시리즈

에어필터 (Suction Filter for Compressor)



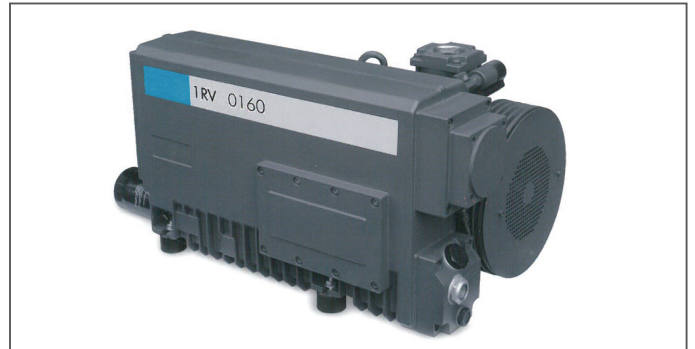
적용모델	규격	중량(kg)
2RB 2./3. 4RB	G1 ¹ / ₄ "	1.4
2RB 4.	G1 ¹ / ₂ "	3.0
2RB 5./7.	55 mm	2.7
2RB 8.	G2 ¹ / ₂ "	5.1
2RB 9.	100 mm	20
2RB 943	135 mm	22

플랜지 (Threaded Flange)



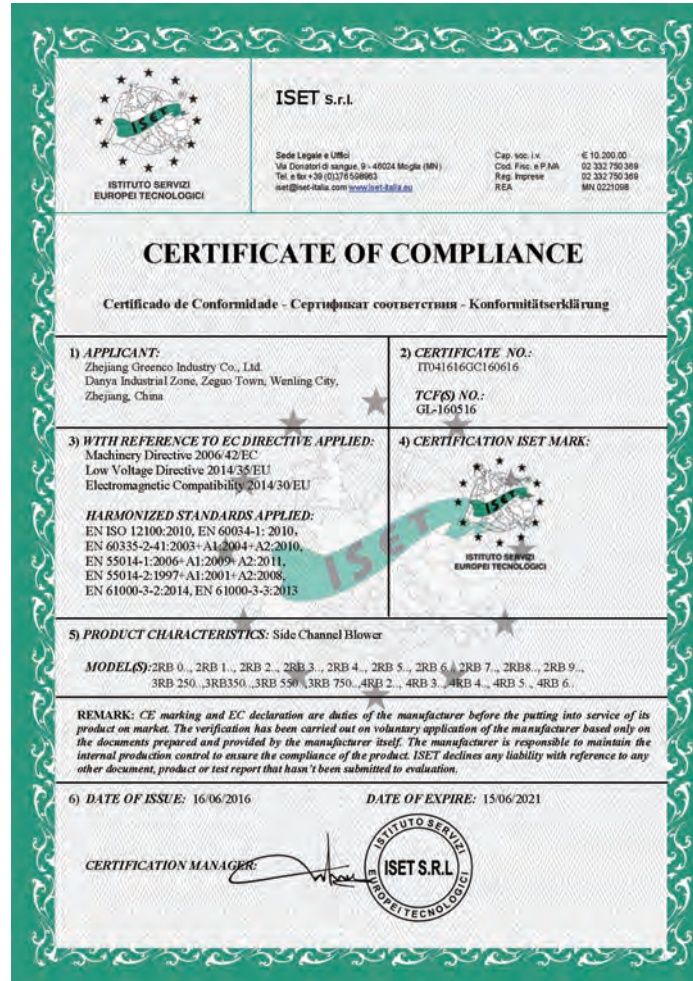
적용모델	주문번호	규격	중량(kg)
2RB 5./6./7.	2BX1 041	G2"	0.46
2RB 91/92	2BX1 042	G4"	1.6

오일 로타리 베인 진공펌프 Oil Rotary Vane Vacuum Pump



사양	단위	1RV0020	1RV0040	1RV0063	1RV0100	1RV0200	1RV0250	1RV0300
정격유량	m ³ /h	24	48	76	120	240	300	360
최대 진공압	hPa (mbar)	0.5	0.1	0.1	0.1	0.1	0.1	0.1
모터 동력	kw	0.75	1.5	2.2	3.0	5.5	7.5	8.6
모터 회전속도	min ⁻¹	3400	1800	1800	1800	1800	1800	1800
소음도	dB(A)	68	68	68	68	75	79	79
오일 주유량	l	0.45	1	2	2	5	6.5	6.5
중량	kg	20	38	55	73	140	190	190
치수 (LxWxH)	mm	338x232x220	640x285x262	635x406x289	736x406x289	854x492x411	1000x581x410	1075x565x421

CE 인증서



취급품목

Denyo	디젤발전기 엔진용접기 컴프레샤
Kawasaki	모터사이클 제트스키 가솔린엔진
HITACHI	미니굴삭기 농업용휠로더
DAIJEON MACHINERY	대형디젤발전기 진동모터
TERAL	링블로워 진공펌프
Gardner Denver	

大電機械工業株式會社
대 전기 계 공 업 주 식 회 사

本社 서울특별시 동대문구 한천로14길 87 (계종B/D 2층)
Tel. (02) 923-6801 Fax: (02) 922-5413
工場 경기도 평택시 서탄면 수월암4길 239
Tel. (031) 668-7700 Fax: (031) 668-6677

KL-DB133

20.07 (-/- -)

Printed in Korea